

# HARTMANN

## PUMPS - MOTORS - CONTROLS

604 Progress Dr., Hartland, WI 53029 USA

Tel: (262) 367-4299

Fax: (262) 367-5645

Email: [sales@hartmanncontrols.com](mailto:sales@hartmanncontrols.com)

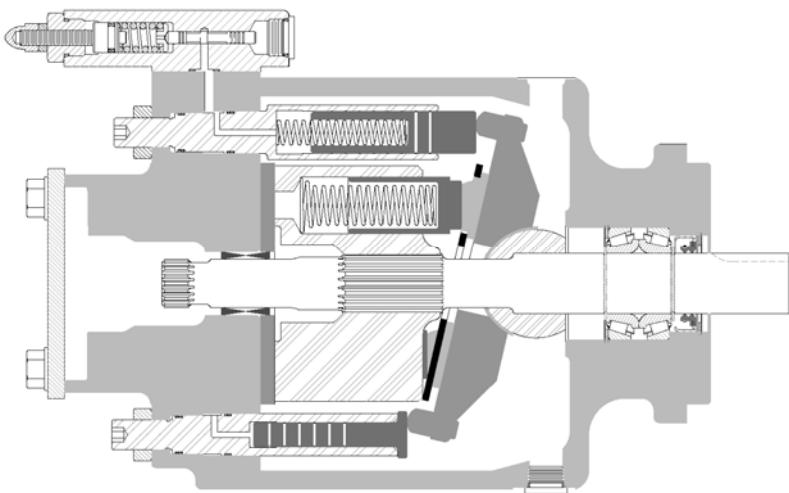
URL: <http://www.hartmanncontrols.com>

### FRAME 2

### PVX 464

(64 cm.<sup>3</sup>/rev.) (4.0 in.<sup>3</sup>/rev.)

VARIABLE DISPLACEMENT, AXIAL PISTON, SWASH PLATE DESIGN PUMP



#### Features:

- Offered with a standard SAE 'C' 2- & 4-bolt mount.
- Incorporated in a compact design with rugged ductile iron frame.
- Offered with variety of porting configurations.
- Offered with a variety of drive shaft options.
- Is Service friendly.
- Equipped with Viton shaft seal and O-rings.
- Can be fitted with a variety of control options.
- Equipped with maximum and minimum volume stops. The latter is adjustable.

This versatile PVX pump is aimed at operating in both industrial and mobile applications. With its continuous operating pressures ranging from 500 to 4000 psi, and shaft speeds up to 2800 rpm at atmospheric inlet conditions, this pump is designed for a long and dependable service.



***Pumps & Motors with a hart of gold*** <sup>TM</sup>

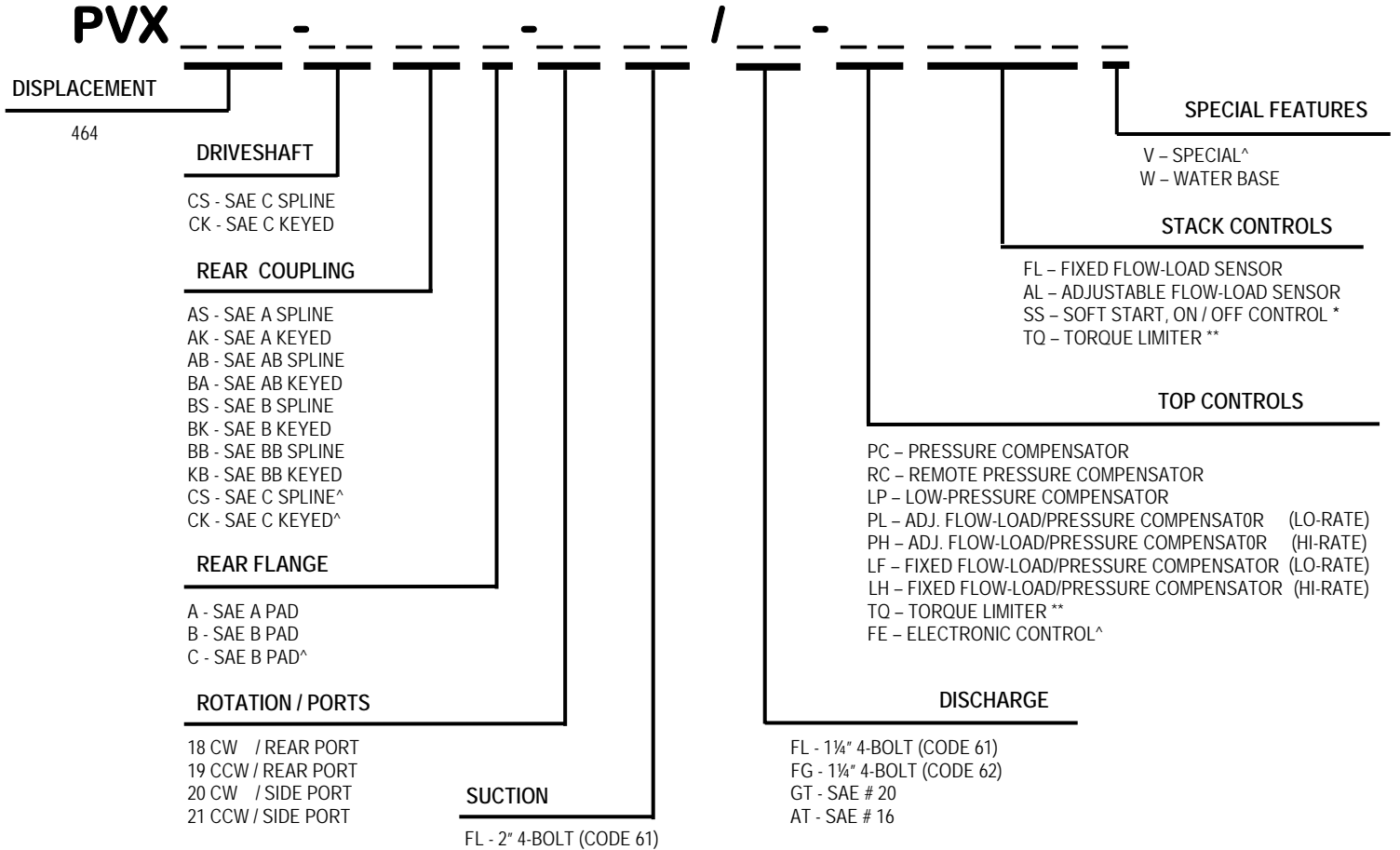
## FRAME 2, PVX 464 SPECIFICATIONS

PVX	RATED PRESSURE	PEAK PRESSURE	MINIMUM PRESSURE	
464	<b>4000 lb/in<sup>2</sup></b> (276 bar)	<b>5000 lb/in<sup>2</sup></b> (345 bar)	<b>500 lb/in<sup>2</sup></b> (34 bar)	
PVX	DISPLACEMENT	THEORETICAL FLOW @ 1800 rpm	SHAFT SPEED	
			MAXIMUM	MINIMUM
464	<b>4.0 in<sup>3</sup>/rev</b> (64 cm <sup>3</sup> /rev)	<b>31.2 gal/min</b> (118.0 l/min)	<b>2800 rpm</b>	<b>600 rpm</b>
PVX	OUTPUT TORQUE @ RATED PRESSURE	SHAFT SIZE	RECOMMENDED TORQUE LIMIT	
464	<b>2,547 in-lb</b> (287.8 N-m)	<b>SAE C</b>	<b>5,328 in-lb</b> (602.0 N-m)	

Input-shaft torque may not exceed the total of front-pump torque and (if added) rear-mounted units.

### MODEL SPECIFICATION CHART

# PVX



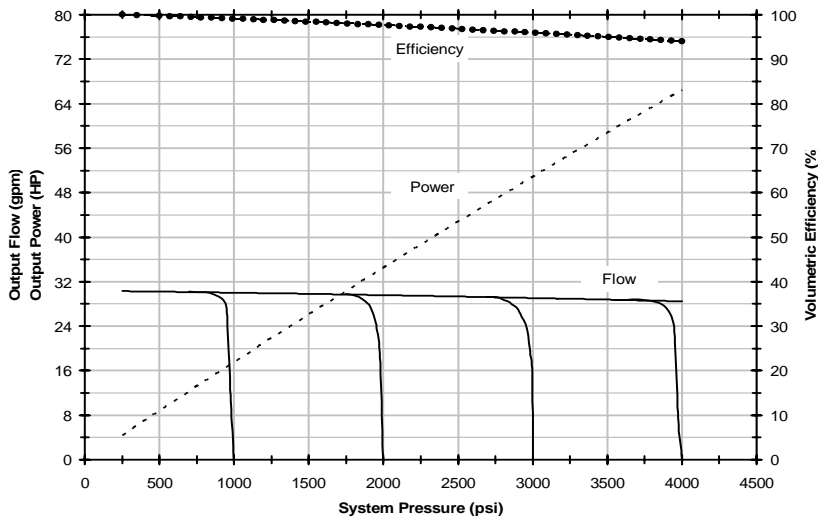
\* - SPECIFY VOLTAGE, CONNECTION AND ENERGIZE OPTION

\*\* - SPECIFY TERMINAL PRESSURE AND HORSE POWER

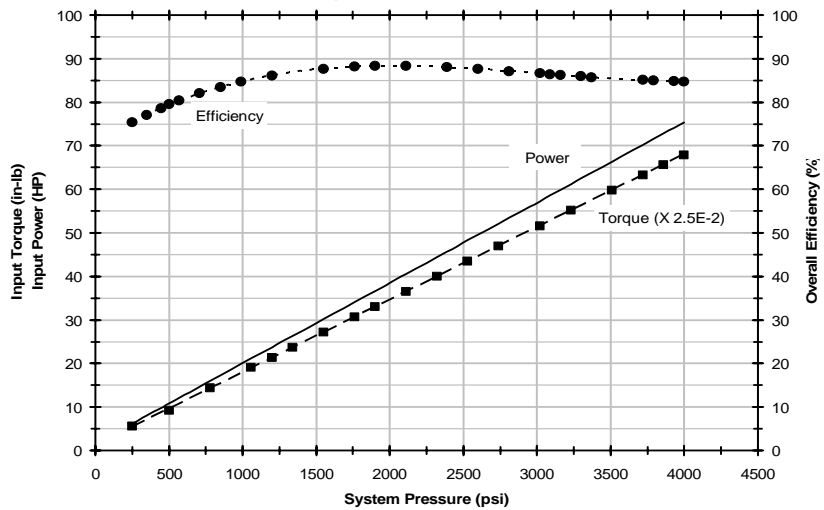
^ - CONSULT FACTORY

# FRAME 2, PVX 464 PERFORMANCE

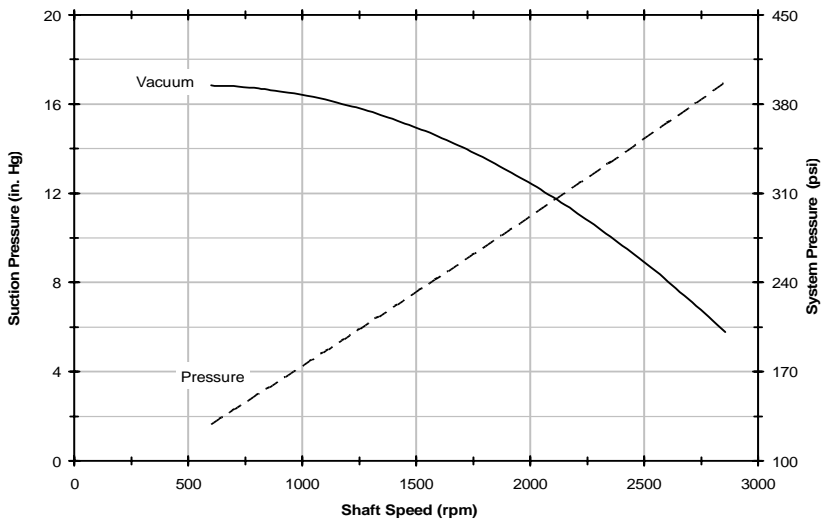
PVX464 pump performance @ 1750 rpm using ISO 32 oil at 115° F



PVX464 pump input power curves @ 1750 rpm using ISO 32 oil at 115° F

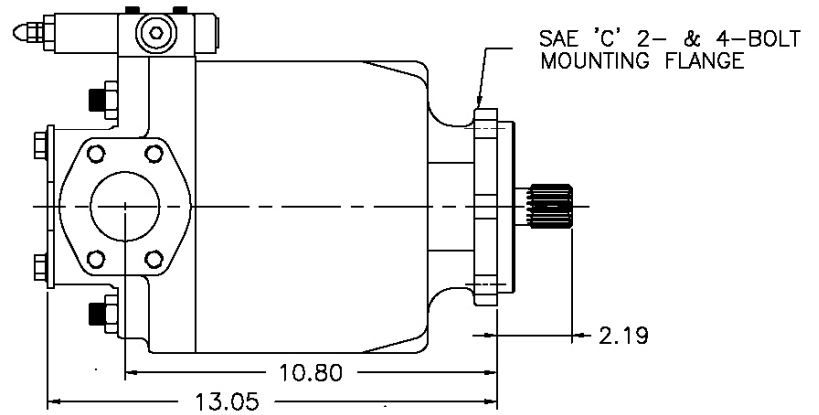
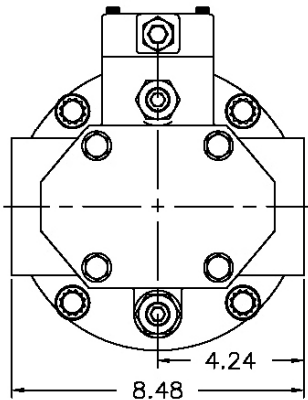
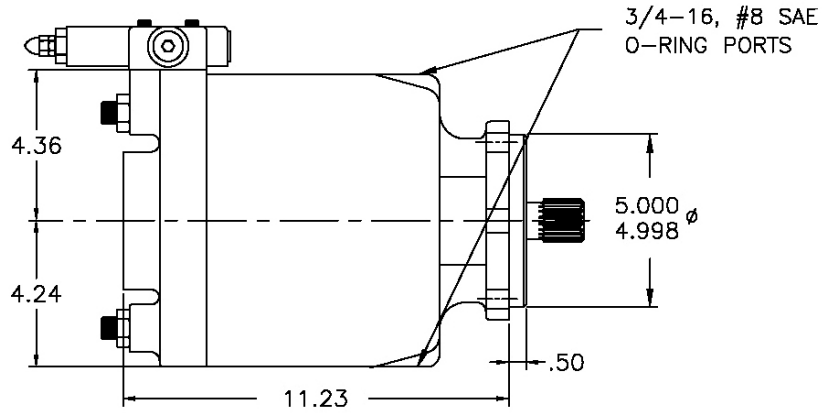
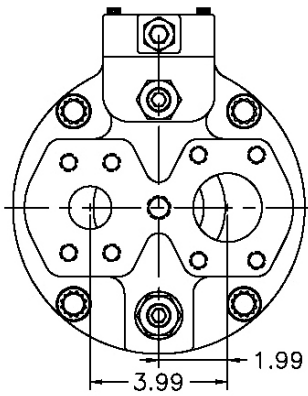


PVX464 pump inlet characteristics based on ISO 32 Oil @ 115°F

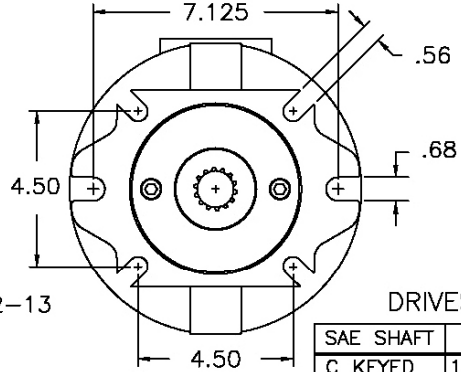
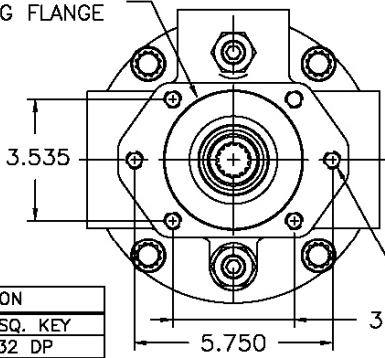
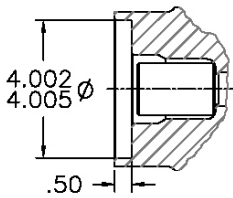


Pump typical weight: Side-Ported 118 lbs. Rear-Ported 110 lbs.

# FRAME 2, PVX 464 DIMENSIONS



SAE "B" 2 & 4 BOLT MOUNTING FLANGE

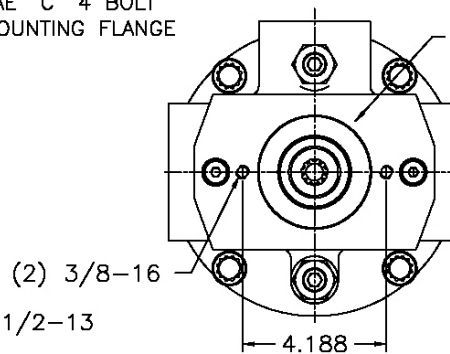
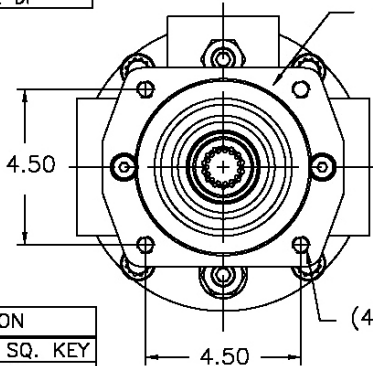
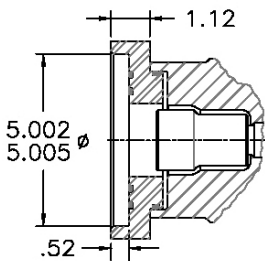


DRIVESHAFT OPTIONS

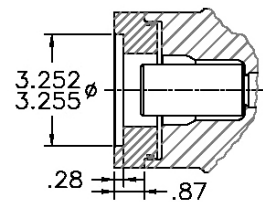
SAE SHAFT	DESCRIPTION
B KEYED	.875 $\phi$ , 1/4 SQ. KEY
B SPLINE	13 T, 16/32 DP
B-B KEYED	1.000 $\phi$ , 1/4 SQ. KEY
B-B SPLINE	15 T, 16/32 DP

SAE SHAFT	DESCRIPTION
C KEYED	1.250 $\phi$ , 5/16 SQ. KEY
C SPLINE	14 T, 12/24 DP

SAE "C" 4 BOLT MOUNTING FLANGE



SAE "A" 2 BOLT MOUNTING FLANGE



SAE SHAFT	DESCRIPTION
C KEYED	1.250 $\phi$ , 5/16 SQ. KEY
C SPLINE	14 T, 12/24 DP

SAE SHAFT	DESCRIPTION
A KEYED	.625 $\phi$ , 5/32 SQ. KEY
A SPLINE	9 T, 16/32 DP
AB KEYED	.750 $\phi$ , 3/16 SQ. KEY
AB SPLINE	11 T, 16/32 DP