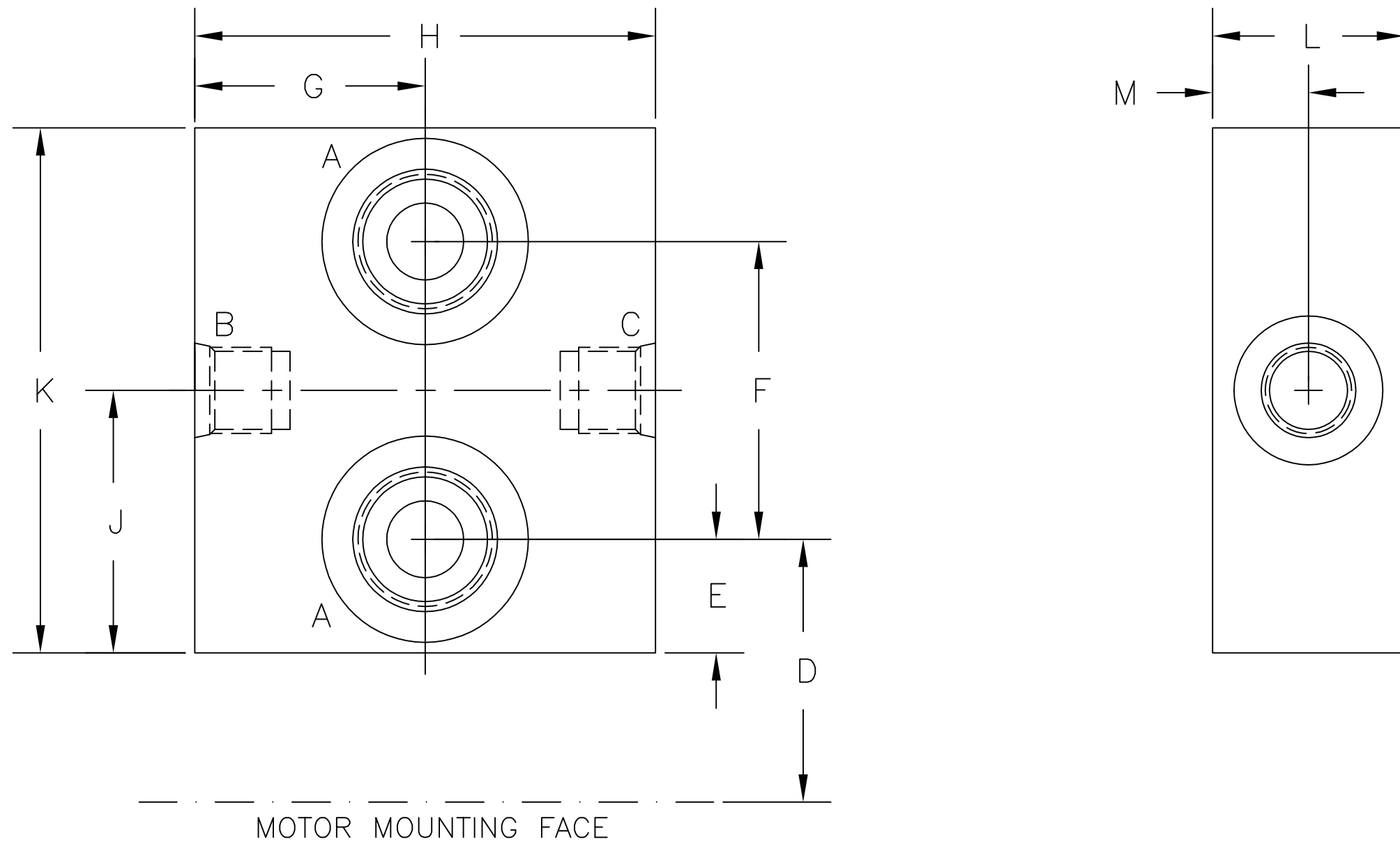


# STANDARD MANIFOLDS FOR ROL-VANE MOTORS



PART NO.	USED ON	PORTS A	DRAIN B	DRAIN C	D	E	F	G	H	J	K	L	M
8H-86	HT5, 10	#6, 9/16-18	#4, 7/16-20	#4, 7/16-20	1.84	.46	1.250	1.250	2.500	1.093	2.172	1.00	.50
8H-15	HT 22	#10, 7/8-14	#6, 9/16-18	#6, 9/16-18	1.31	.56	1.500	1.38	2.75	1.31	2.62	1.22	.61
8H-117	HT 50	#10, 7/8-14	NONE	#6, 9/16-18	1.62	.74	1.947	1.50	3.00	1.71	3.42	1.37	.69
8H-145	HT 76	#12, 1.062-12	NONE	#6, 9/16-18	2.93	1.06	2.250	1.50	3.00	1.63	4.37	1.25	.62
8H-155	HT 100	#12, 1.062-12	NONE	#6, 9/16-18	2.90	1.03	2.625	1.50	3.00	1.65	4.69	1.25	.62