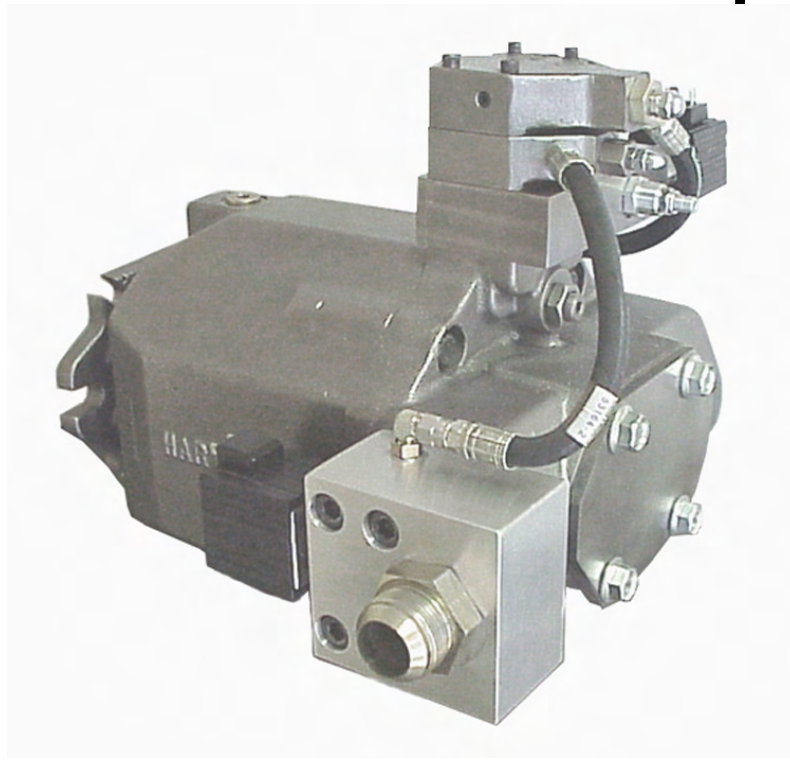
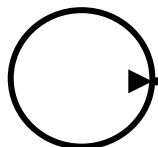




SS, Standard Soft Start Control for PVX Series Pumps



*Hydraulic pumps & motors with a **hart of gold**™*



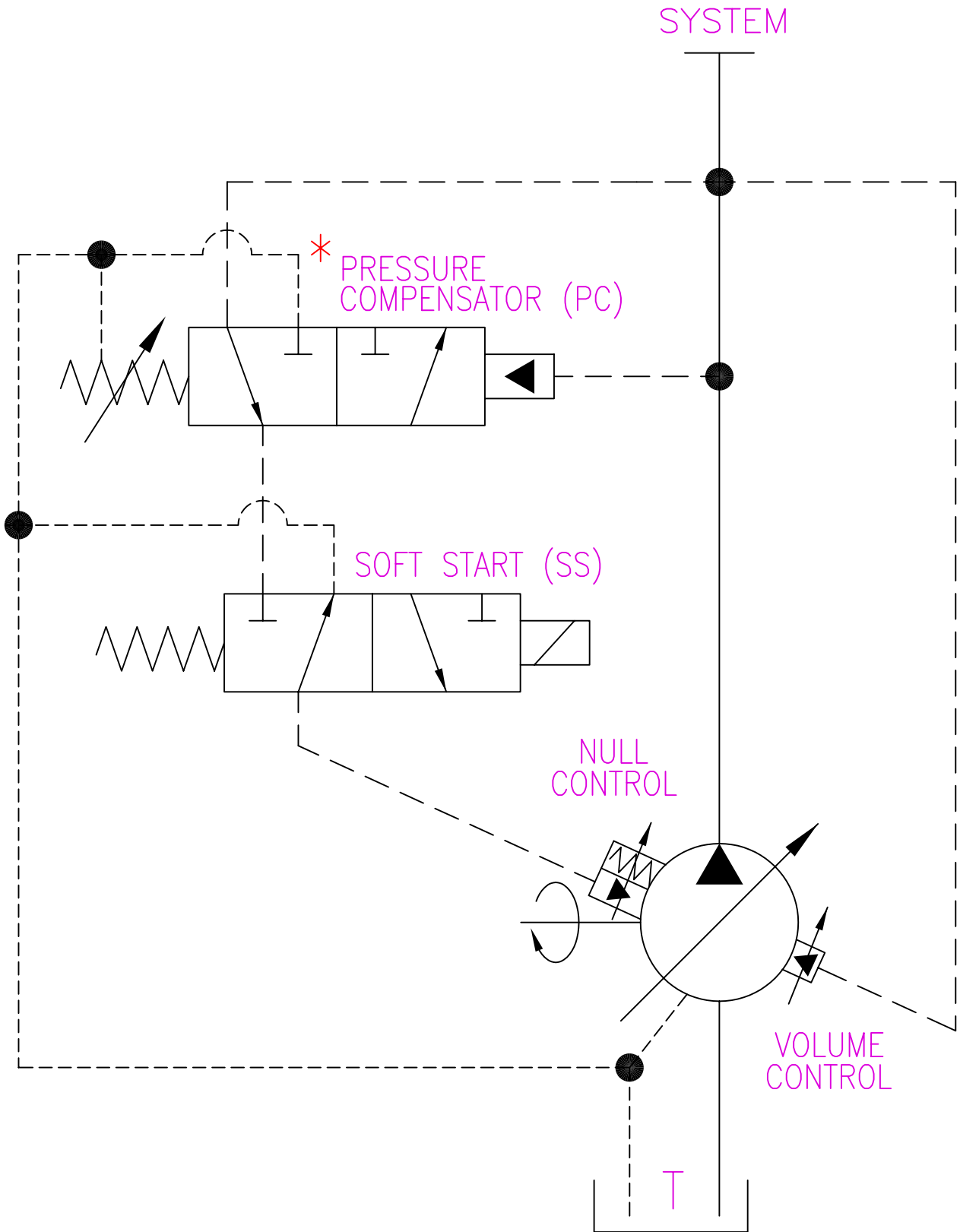
**604 PROGRESS DRIVE, HARTLAND, WI 53029
USA**

Phone: (262) 367-4299

URL: www.hartmanncontrols.com

FAX: (262) 367-5645

E-mail: sales@hartmanncontrols.com

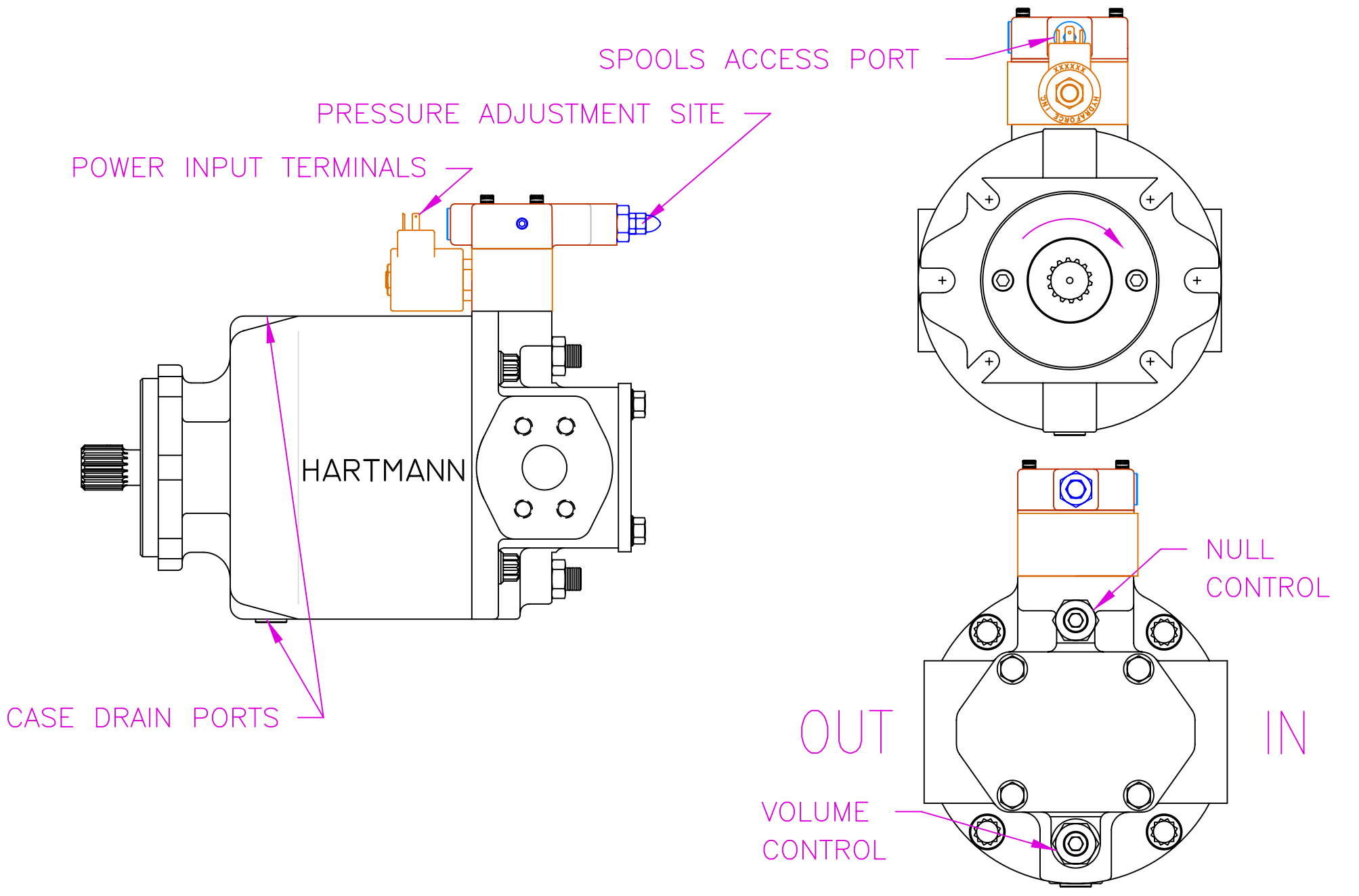


*- ALSO APPLIES TO HC, SC & LP

NOT TO SCALE
 THE INFORMATION CONTAINED HEREIN IS THE PROPERTY OF HARTMANN CONTROLS INC., AND IS NOT TO BE USED IN A MANNER DETRIMENTAL TO HARTMANN CONTROLS INC.
 DWG: SCMPCSS

TITLE: STANDARD SOFT START & PRESSURE COMPENSATOR





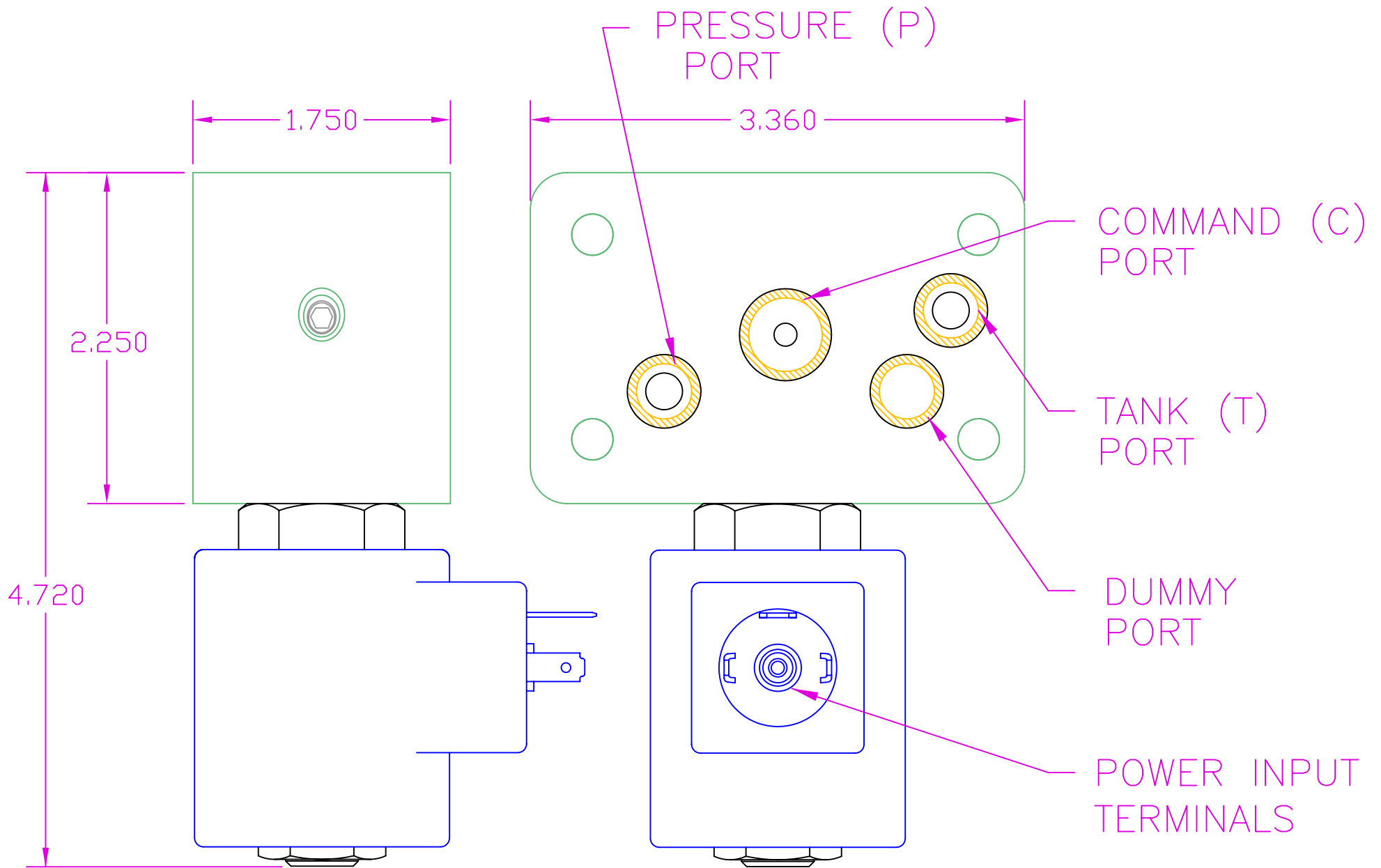
NOT TO SCALE

THE INFORMATION CONTAINED HEREIN IS THE PROPERTY OF HARTMANN CONTROLS INC., AND IS NOT TO BE USED IN A MANNER DETRIMENTAL TO HARTMANN CONTROLS INC.

DWG NO: PCSSPUMP

TITLE: PVX PUMP WITH A STANDARD SOFT START AND PRESSURE COMPENSATOR

HARTMANN
CONTROLS INC.
604 PROGRESS DRIVE
HARTLAND, WI 53029



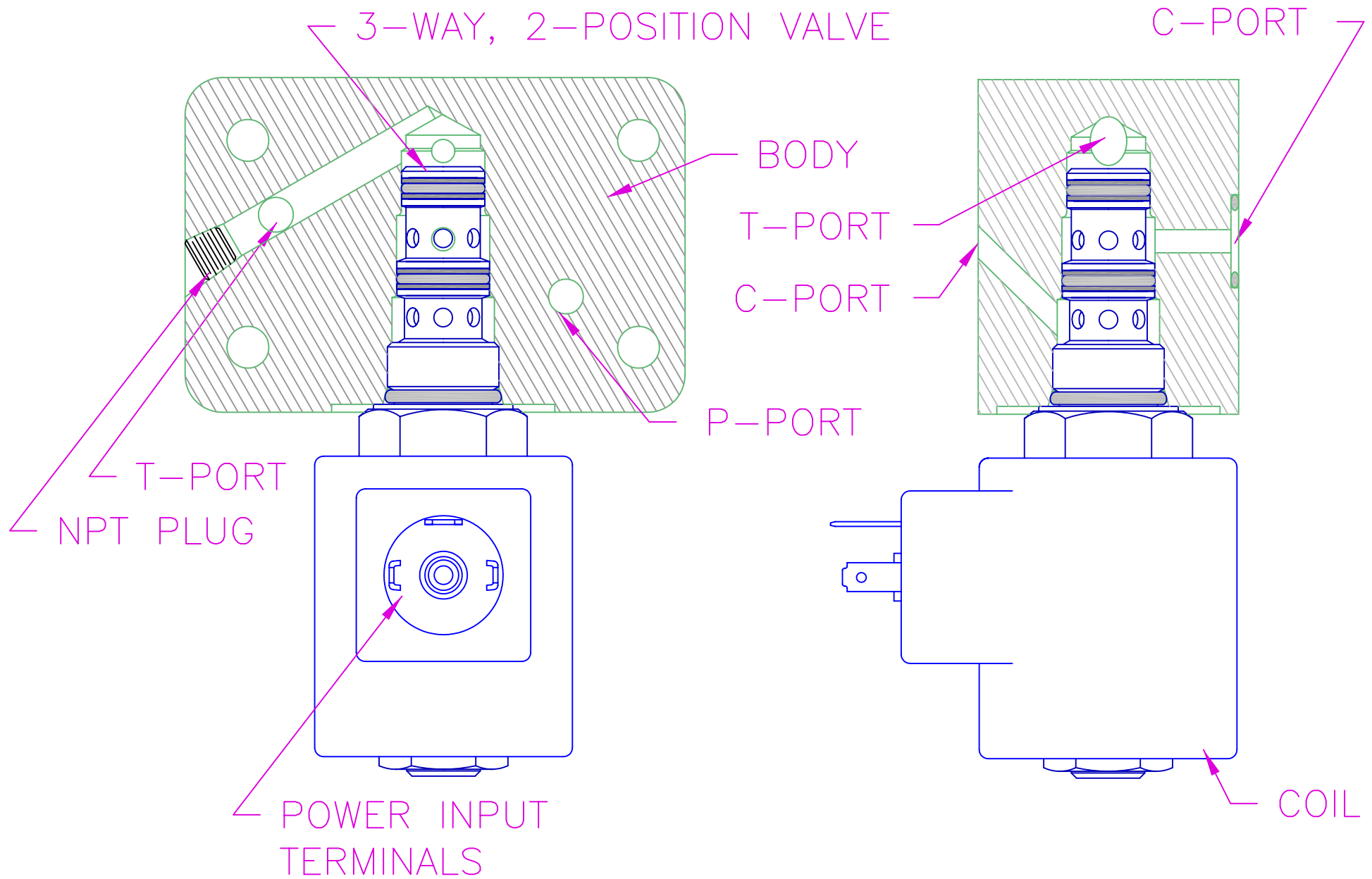
NOT TO SCALE

THE INFORMATION CONTAINED HEREIN IS THE PROPERTY OF HARTMANN CONTROLS INC., AND IS NOT TO BE USED IN A MANNER DETRIMENTAL TO HARTMANN CONTROLS INC.

DWG NO: 52470DIM

TITLE: OUTLINE OF A STANDARD,
SOLENOID ACTIVATED
SOFT START CONTROL





NOT TO SCALE

THE INFORMATION CONTAINED HEREIN IS THE PROPERTY OF HARTMANN CONTROLS INC., AND IS NOT TO BE USED IN A MANNER DETRIMENTAL TO HARTMANN CONTROLS INC.

DWG NO: 52470LAY

TITLE: LAYOUT OF A STANDARD, SOLENOID ACTIVATED SOFT START CONTROL



SOFT-START CONTROLLED PERFORMANCE OF A VARIABLE DISPLACEMENT, AXIAL PISTON PUMP; ISO 32 OIL @ 115 °F

