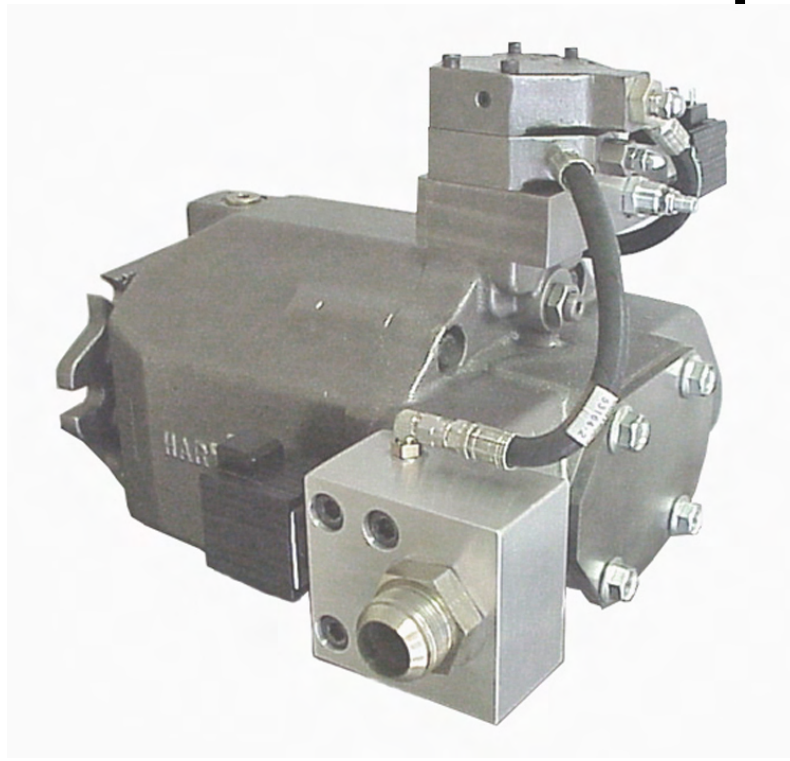
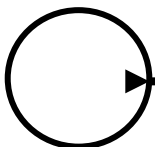


**HARTMANN**  
**PUMPS - MOTORS - CONTROLS**

SS, 90°-Oriented, Normally  
Open or Closed Soft Start for  
PVX Series Pumps



*Hydraulic pumps & motors with a **hart of gold**™*



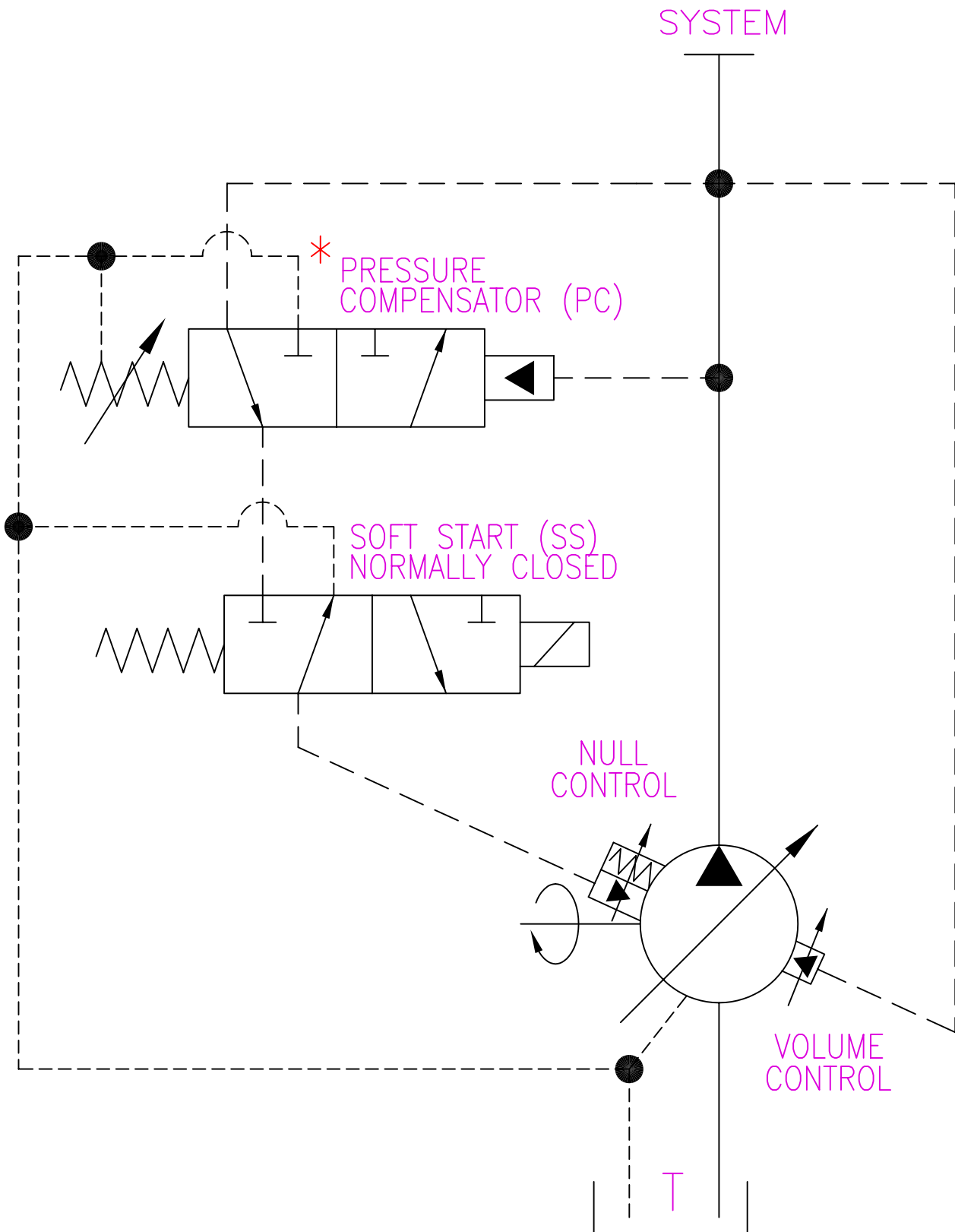
**604 PROGRESS DRIVE, HARTLAND, WI 53029  
USA**

**Phone: (262) 367-4299**

**FAX: (262) 367-5645**

**URL: [www.hartmanncontrols.com](http://www.hartmanncontrols.com)**

**E-mail: [sales@hartmanncontrols.com](mailto:sales@hartmanncontrols.com)**

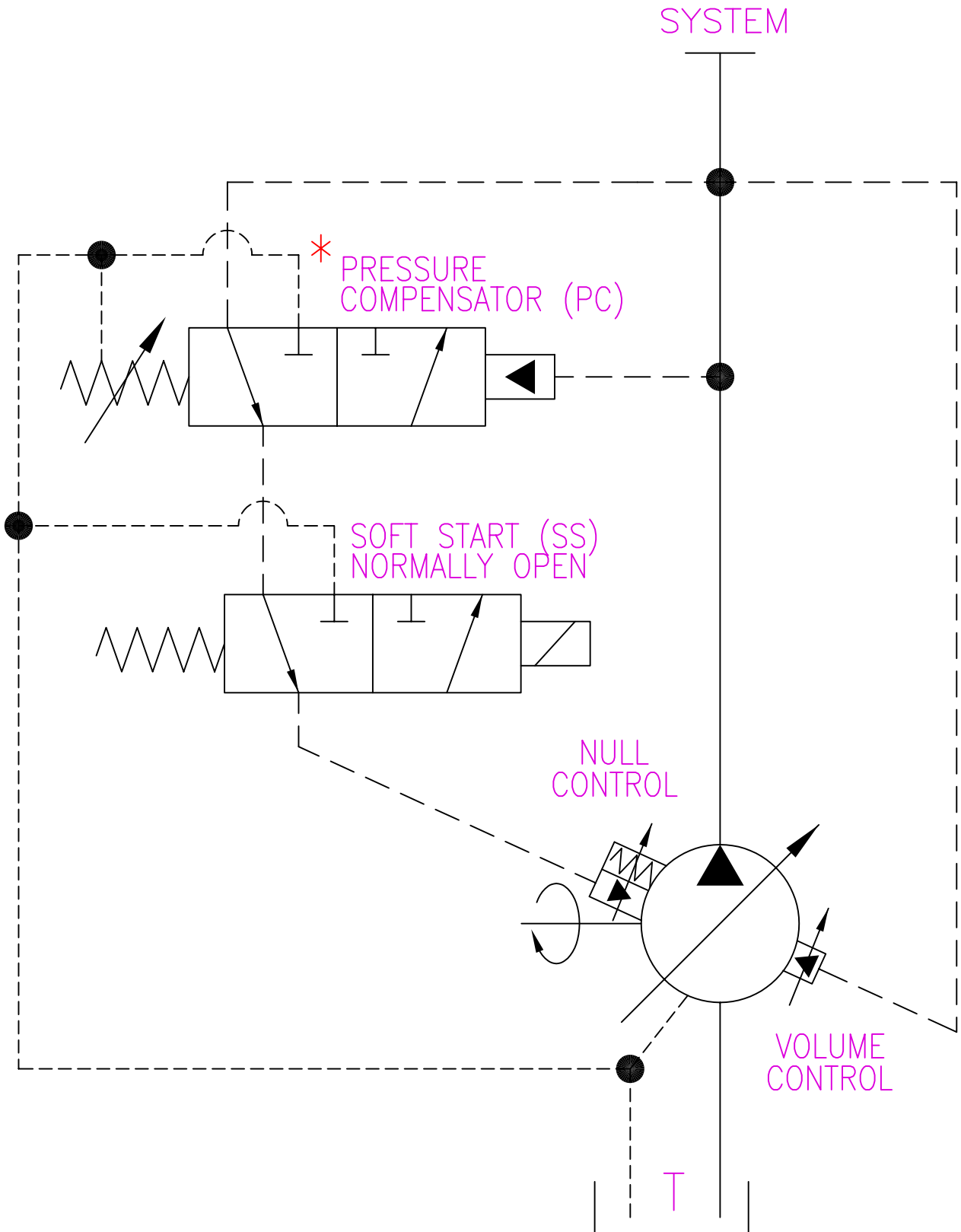


\* - ALSO APPLIES TO HC, SC & LP

NOT TO SCALE  
 THE INFORMATION CONTAINED HEREIN IS THE PROPERTY OF HARTMANN CONTROLS INC., AND IS NOT TO BE USED IN A MANNER DETRIMENTAL TO HARTMANN CONTROLS INC.  
 DWG: SCMPCSSNC

TITLE: SOFT START (NC)  
 WITH PRESSURE  
 COMPENSATOR

**HARTMANN**  
 CONTROLS INC.  
 604 PROGRESS DRIVE  
 HARTLAND, WI 53029



\* - ALSO APPLIES TO HC, SC & LP

NOT TO SCALE

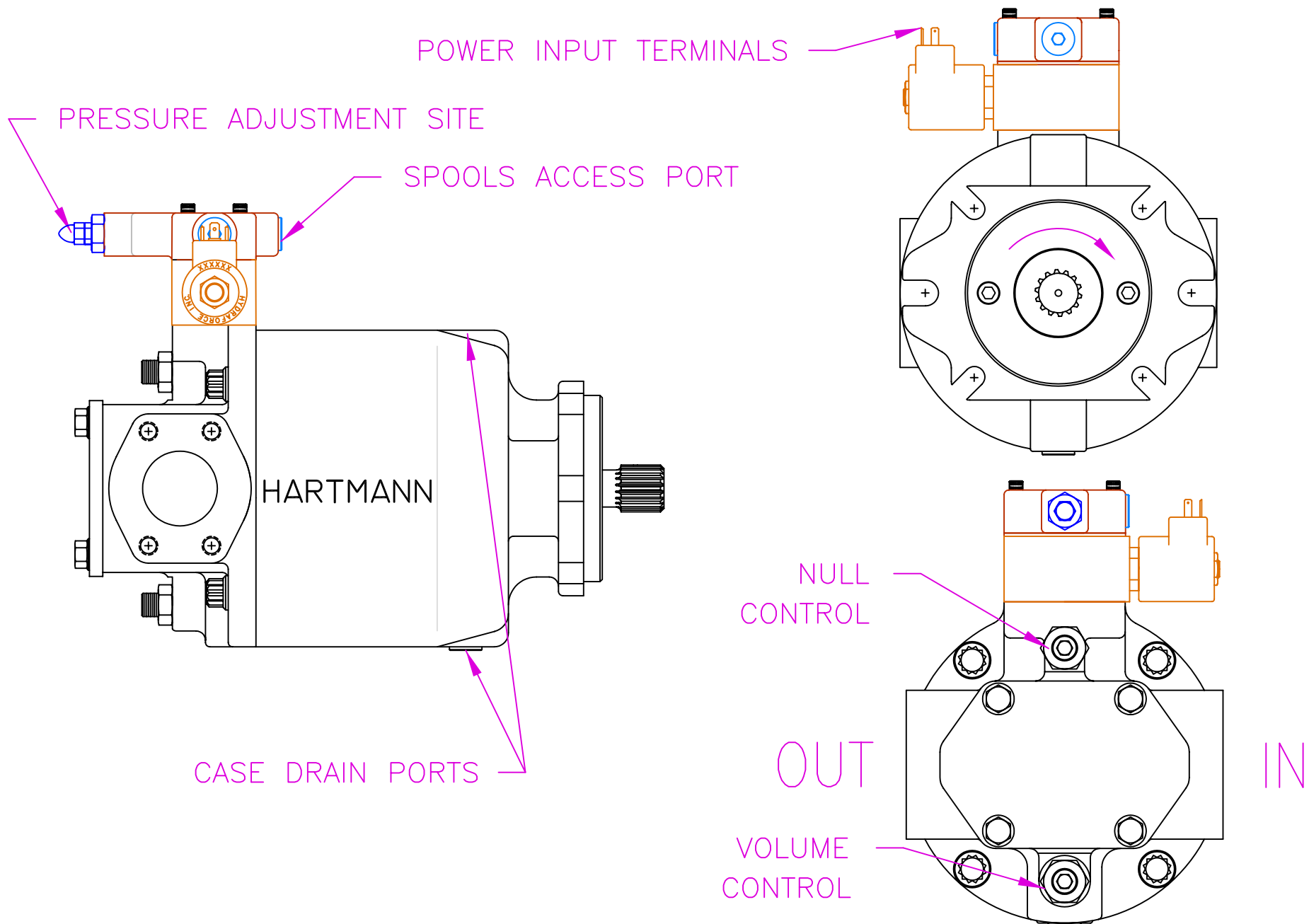
THE INFORMATION CONTAINED HEREIN IS THE PROPERTY OF HARTMANN CONTROLS INC., AND IS NOT TO BE USED IN A MANNER DETRIMENTAL TO HARTMANN CONTROLS INC.

DWG: SCMPCSSNO

TITLE: SOFT START (NO) WITH PRESSURE COMPENSATOR

**HARTMANN**  
CONTROLS INC.

604 PROGRESS DRIVE  
HARTLAND, WI 53029



NOT TO SCALE

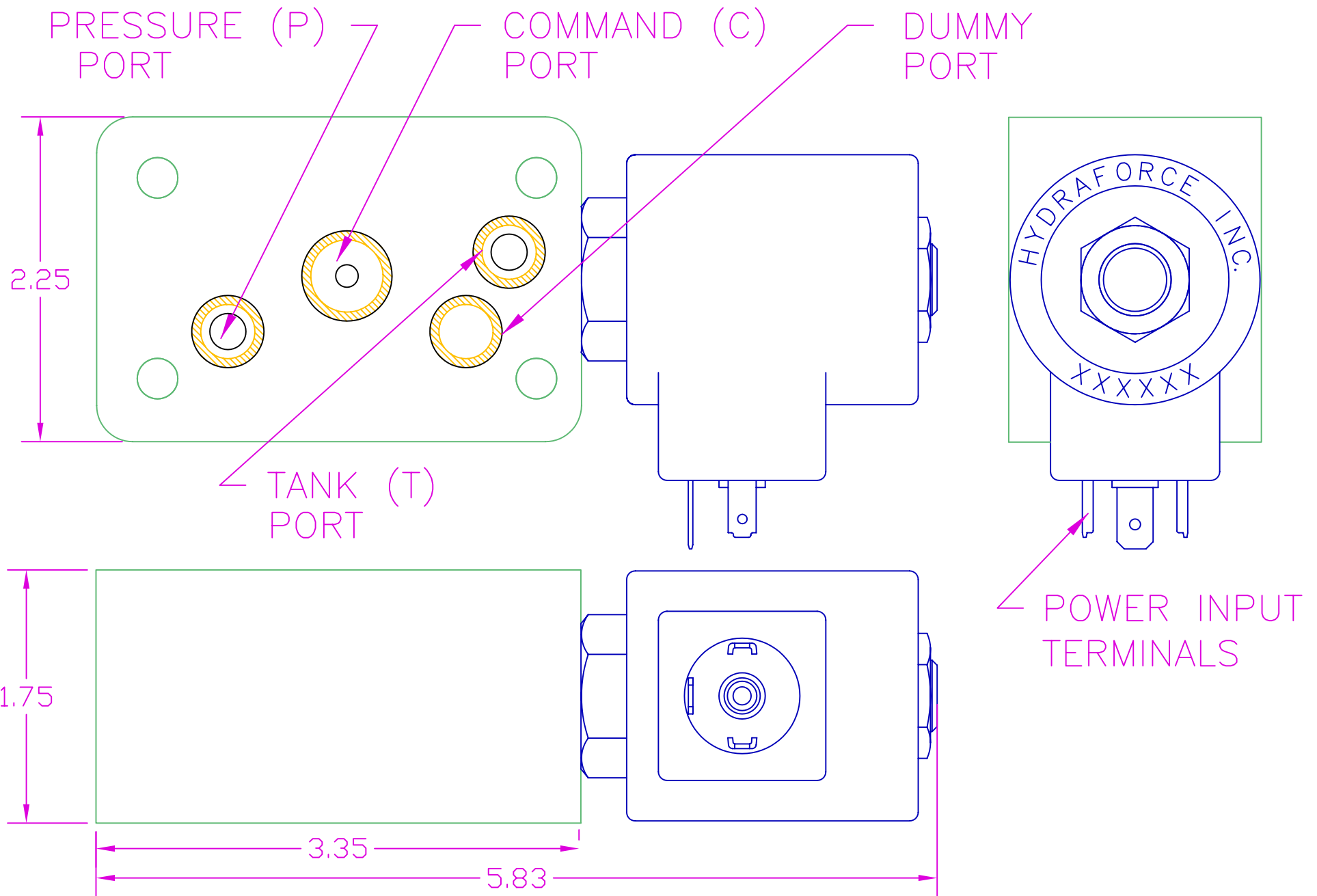
THE INFORMATION CONTAINED HEREIN IS THE PROPERTY OF HARTMANN CONTROLS INC., AND IS NOT TO BE USED IN A MANNER DETRIMENTAL TO HARTMANN CONTROLS INC.

DWG NO: PCSSNCNOPUMP

TITLE: PVX WITH A NC/NO,  
90°-ORIENTED SOFT START  
& PRESSURE COMPENSATOR

**HARTMANN**  
CONTROLS INC.

604 PROGRESS DRIVE  
HARTLAND, WI 53029



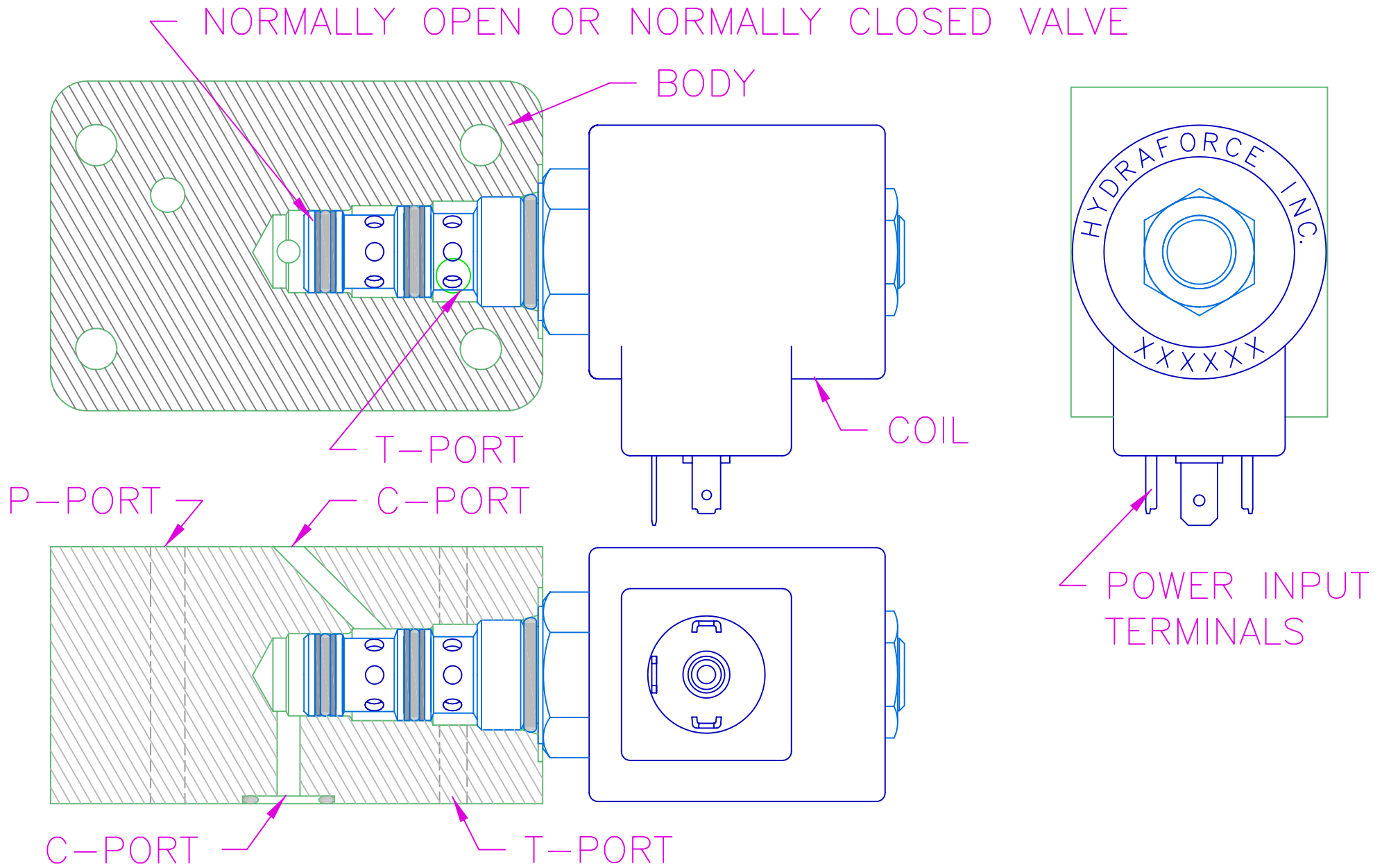
NOT TO SCALE

THE INFORMATION CONTAINED HEREIN IS THE PROPERTY OF HARTMANN CONTROLS INC., AND IS NOT TO BE USED IN A MANNER DETRIMENTAL TO HARTMANN CONTROLS INC.

DWG NO: 52147DIM

TITLE: OUTLINE OF A NC/NO,  
90°-ORIENTED & SOLENOID  
ACTIVATED SOFT START

**HARTMANN**  
CONTROLS INC.  
604 PROGRESS DRIVE  
HARTLAND, WI 53029



NOT TO SCALE

THE INFORMATION CONTAINED HEREIN IS THE PROPERTY OF HARTMANN CONTROLS INC., AND IS NOT TO BE USED IN A MANNER DETRIMENTAL TO HARTMANN CONTROLS INC.

DWG NO: 52147LAY

TITLE: LAYOUT OF A NC/NO,  
90°-ORIENTED & SOLENOID  
ACTIVATED SOFT START



# SOFT-START CONTROLLED PERFORMANCE OF A VARIABLE DISPLACEMENT, AXIAL PISTON PUMP; ISO 32 OIL @ 115 °F

