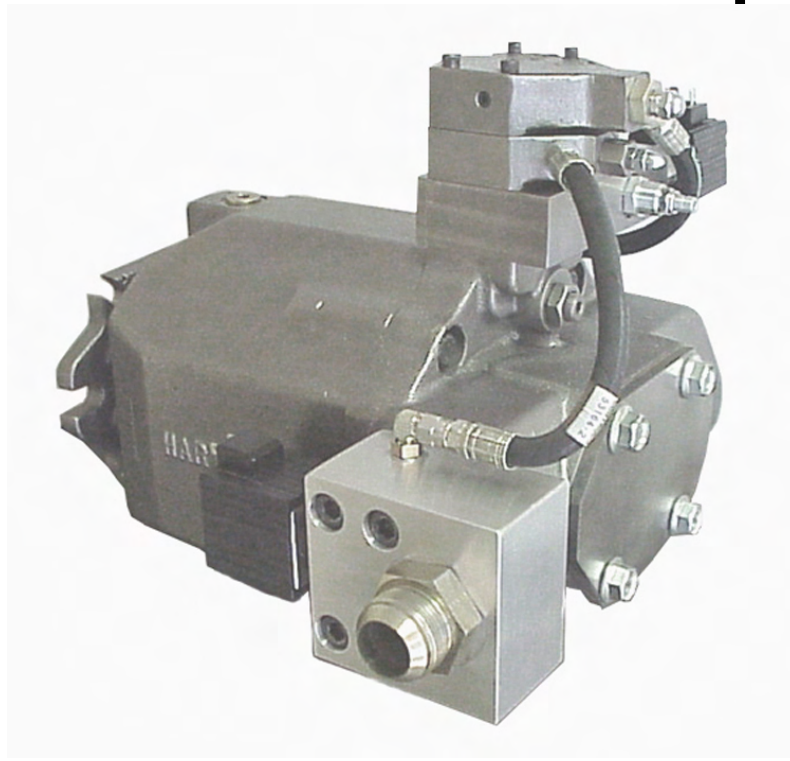
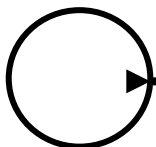




PT, Pressure Trimming Control for PVX Series Pumps



*Hydraulic pumps & motors with a **hart of gold**™*



**604 PROGRESS DRIVE, HARTLAND, WI 53029
USA**

Phone: (262) 367-4299

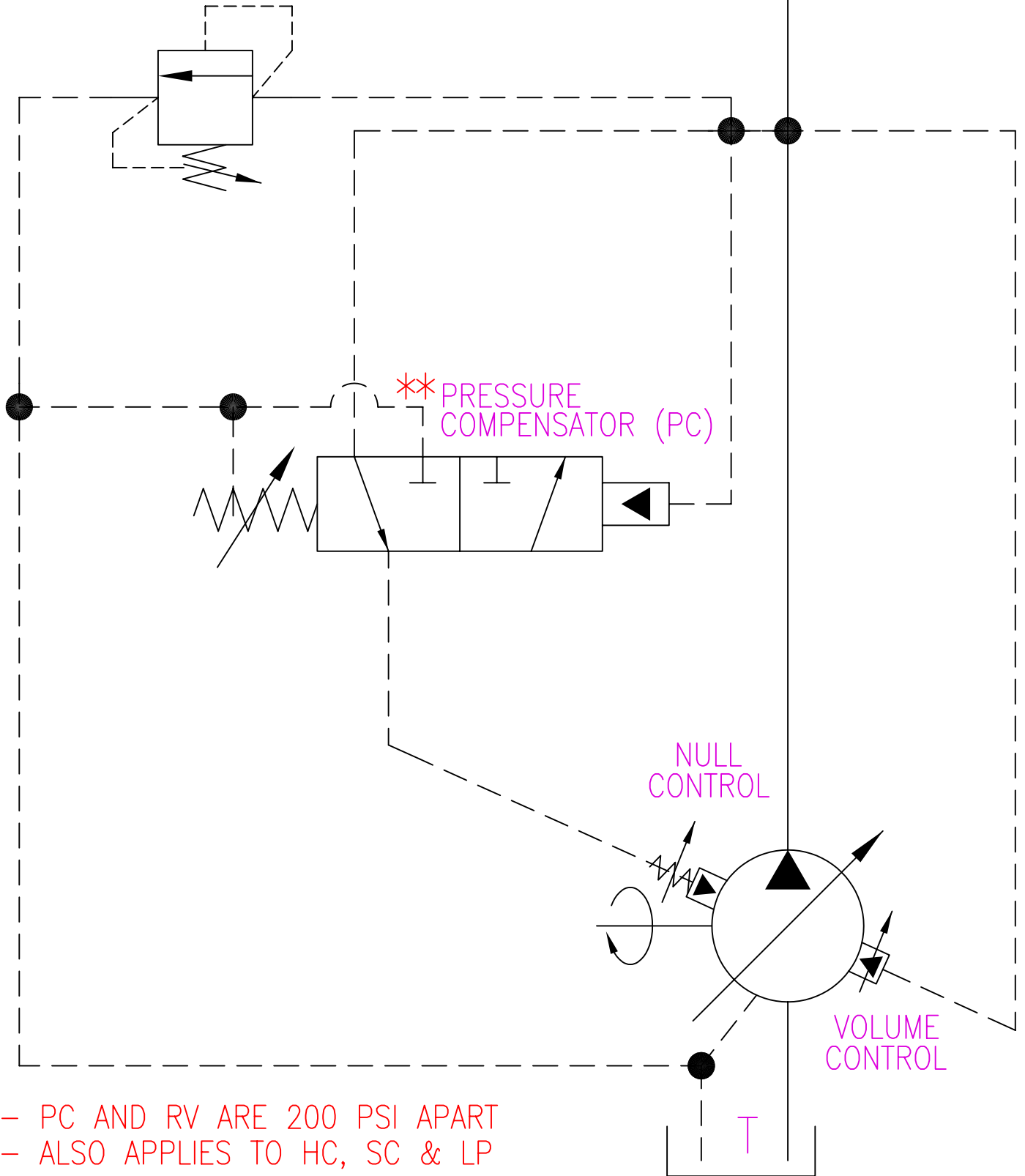
URL: www.hartmanncontrols.com

FAX: (262) 367-5645

E-mail: sales@hartmanncontrols.com

* FAST ACTING RELIEF VALVE (PT)

SYSTEM



*- PC AND RV ARE 200 PSI APART
**- ALSO APPLIES TO HC, SC & LP

NOT TO SCALE

THE INFORMATION CONTAINED HEREIN IS THE PROPERTY OF HARTMANN CONTROLS INC., AND IS NOT TO BE USED IN A MANNER DETRIMENTAL TO HARTMANN CONTROLS INC.

DWG: SCMPCT

TITLE: FAST TRIMMING CONTROL WITH STANDARD PRESSURE COMPENSATOR

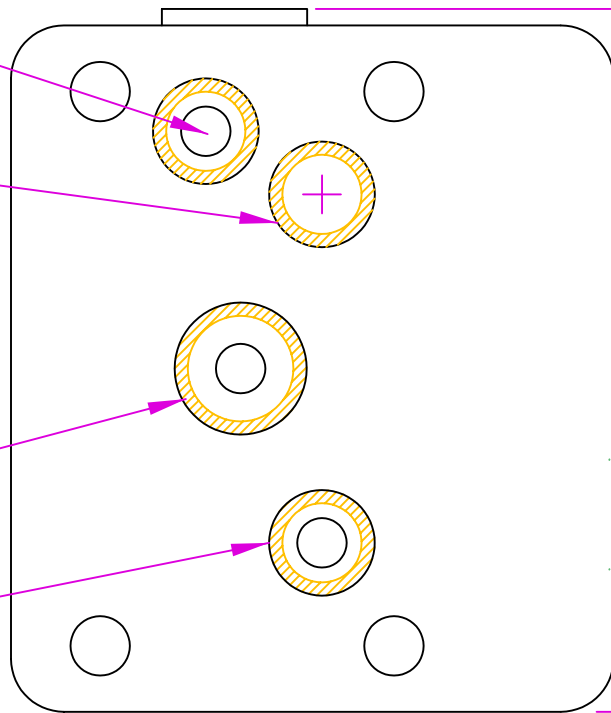
HARTMANN
CONTROLS INC.
604 PROGRESS DRIVE
HARTLAND, WI 53029

TANK (T)
PORT

DUMMY
PORT

COMMAND (C)
PORT

PRESSURE (P)
PORT



3.33

4.38

1.00

2.85

PRESSURE
TRIMMING
ADJUSTMENT

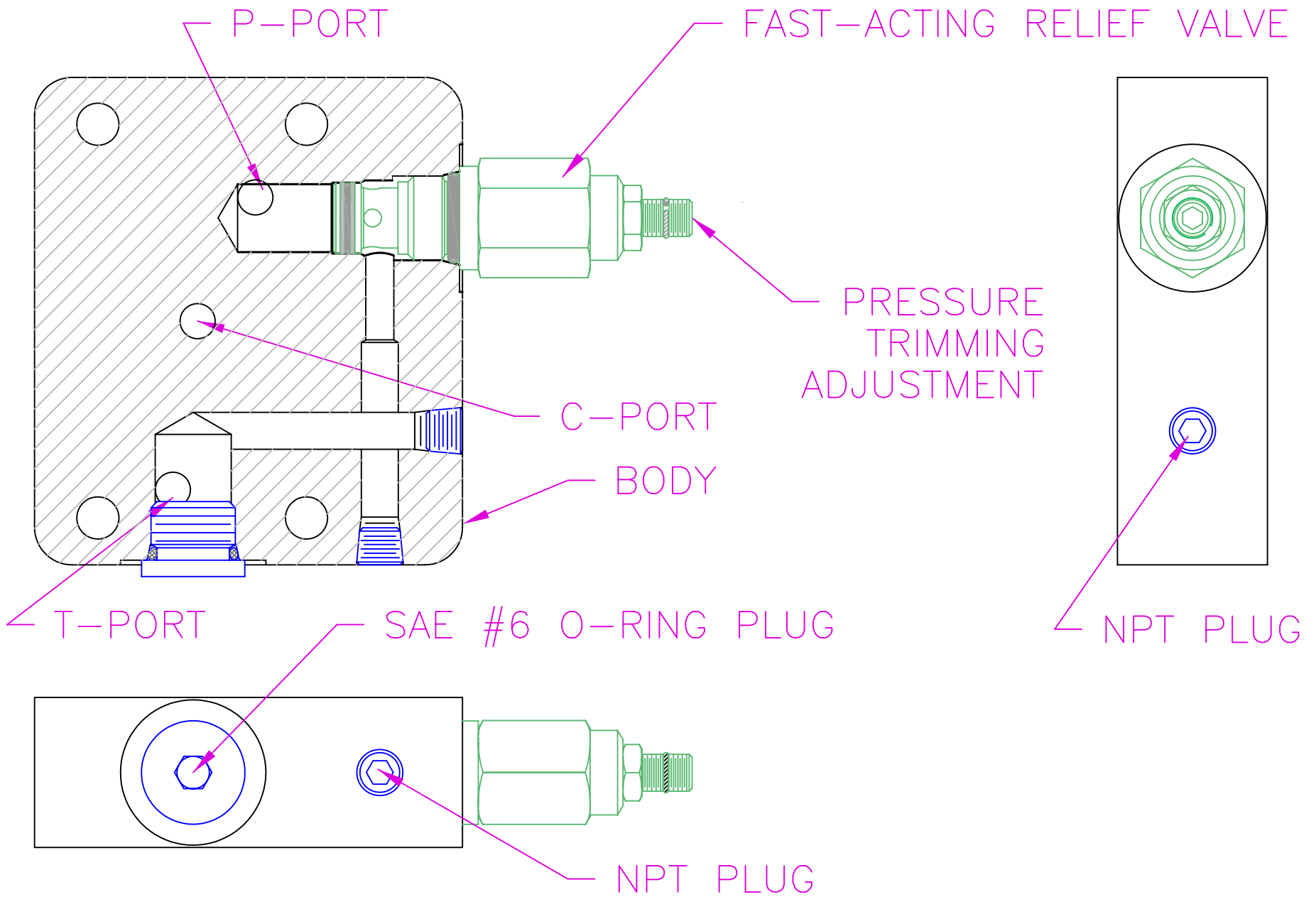
NOT TO SCALE

TITLE: OUTLINE OF A
PRESSURE TRIMMING
CONTROL

THE INFORMATION CONTAINED HEREIN IS THE PROPERTY OF
HARTMANN CONTROLS INC., AND IS NOT TO BE USED IN A
MANNER DETRIMENTAL TO HARTMANN CONTROLS INC.

DWG NO: 53502-1DIM





NOT TO SCALE

TITLE: LAYOUT OF A
PRESSURE TRIMMING
CONTROL

THE INFORMATION CONTAINED HEREIN IS THE PROPERTY OF
HARTMANN CONTROLS INC., AND IS NOT TO BE USED IN A
MANNER DETRIMENTAL TO HARTMANN CONTROLS INC.

DWG NO: 53502-1LAY