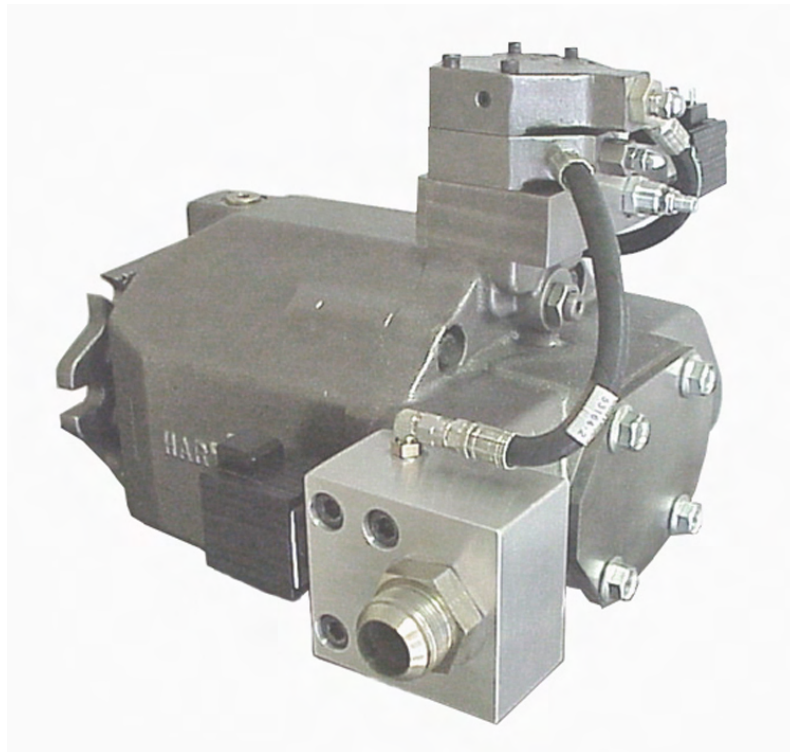
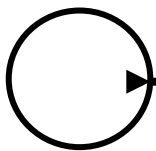




# LF-LH, Fixed Bias, Load Sensor & Pressure Compensator Control for PVX Series Pumps



*Hydraulic pumps & motors with a **hart of gold**™*



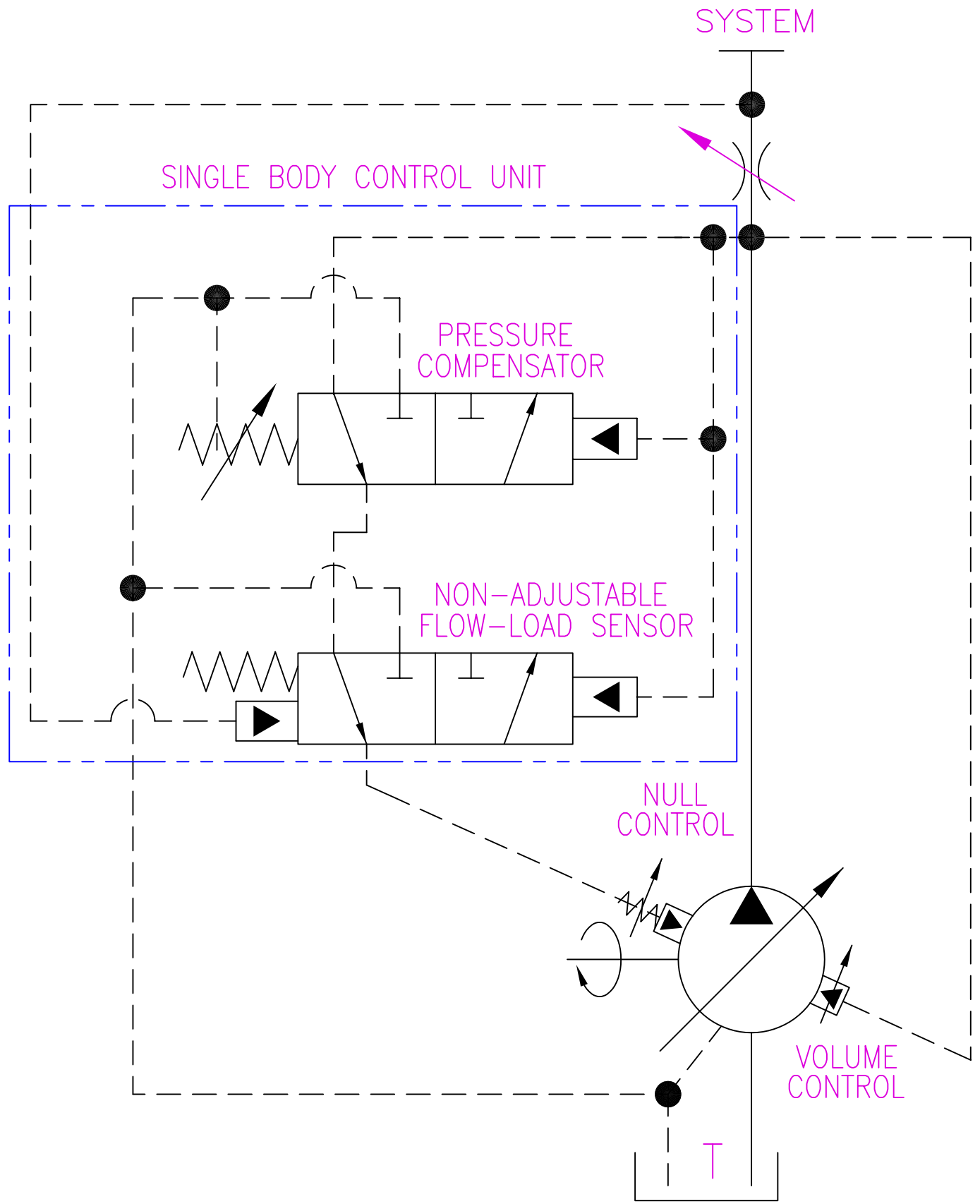
**604 PROGRESS DRIVE, HARTLAND, WI 53029  
USA**

**Phone: (262) 367-4299**

**FAX: (262) 367-5645**

**URL: [www.hartmanncontrols.com](http://www.hartmanncontrols.com)**

**E-mail: [sales@hartmanncontrols.com](mailto:sales@hartmanncontrols.com)**



NOT TO SCALE

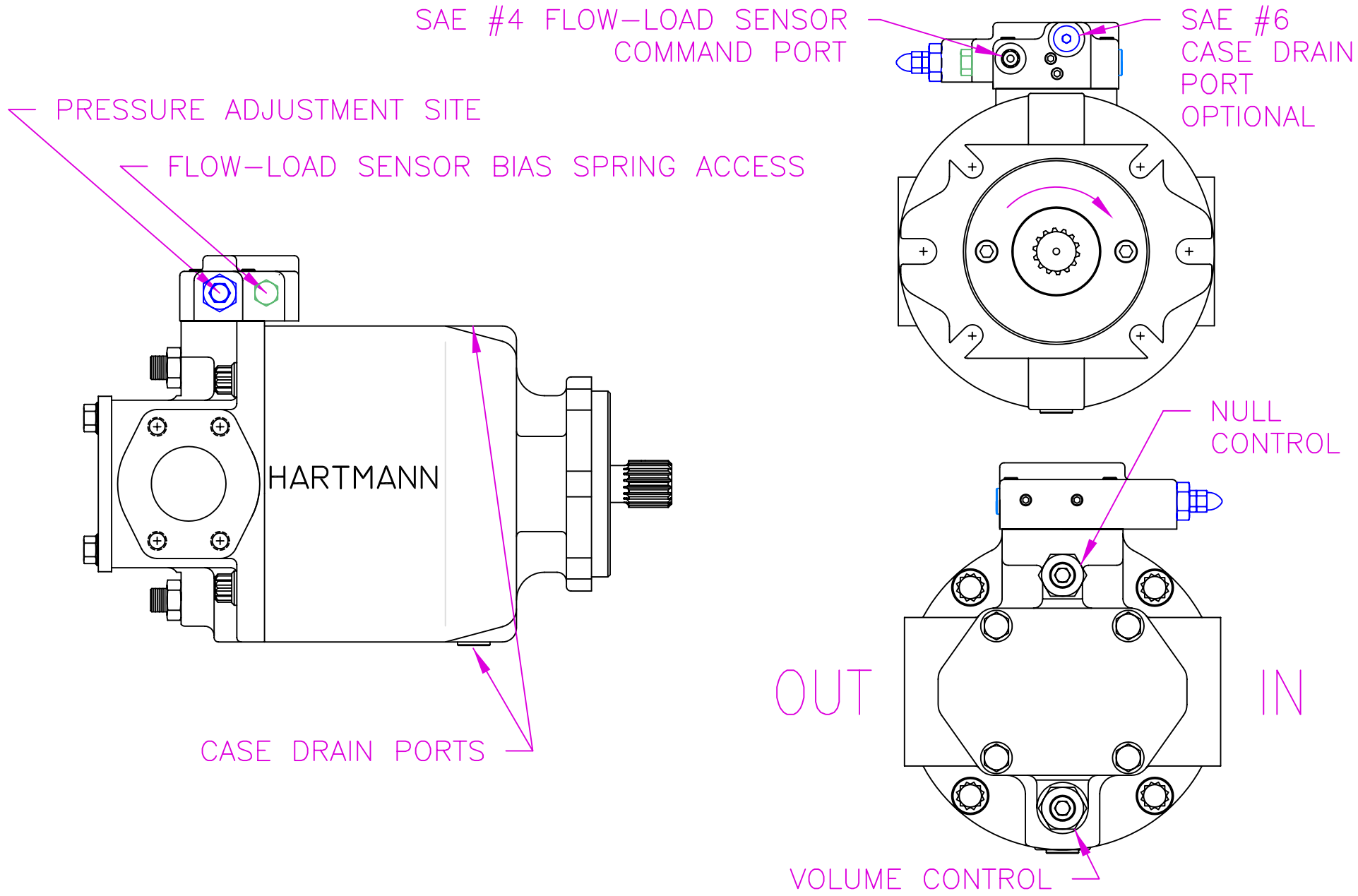
THE INFORMATION CONTAINED HEREIN IS THE PROPERTY OF HARTMANN CONTROLS INC., AND IS NOT TO BE USED IN A MANNER DETRIMENTAL TO HARTMANN CONTROLS INC.

DWG: SCMLFLH

TITLE: FIXED BIAS, FLOW LOAD SENSOR AND PRESSURE COMPENSATOR UNIT

604 PROGRESS DRIVE  
HARTLAND, WI 53029

CONTROLS INC.



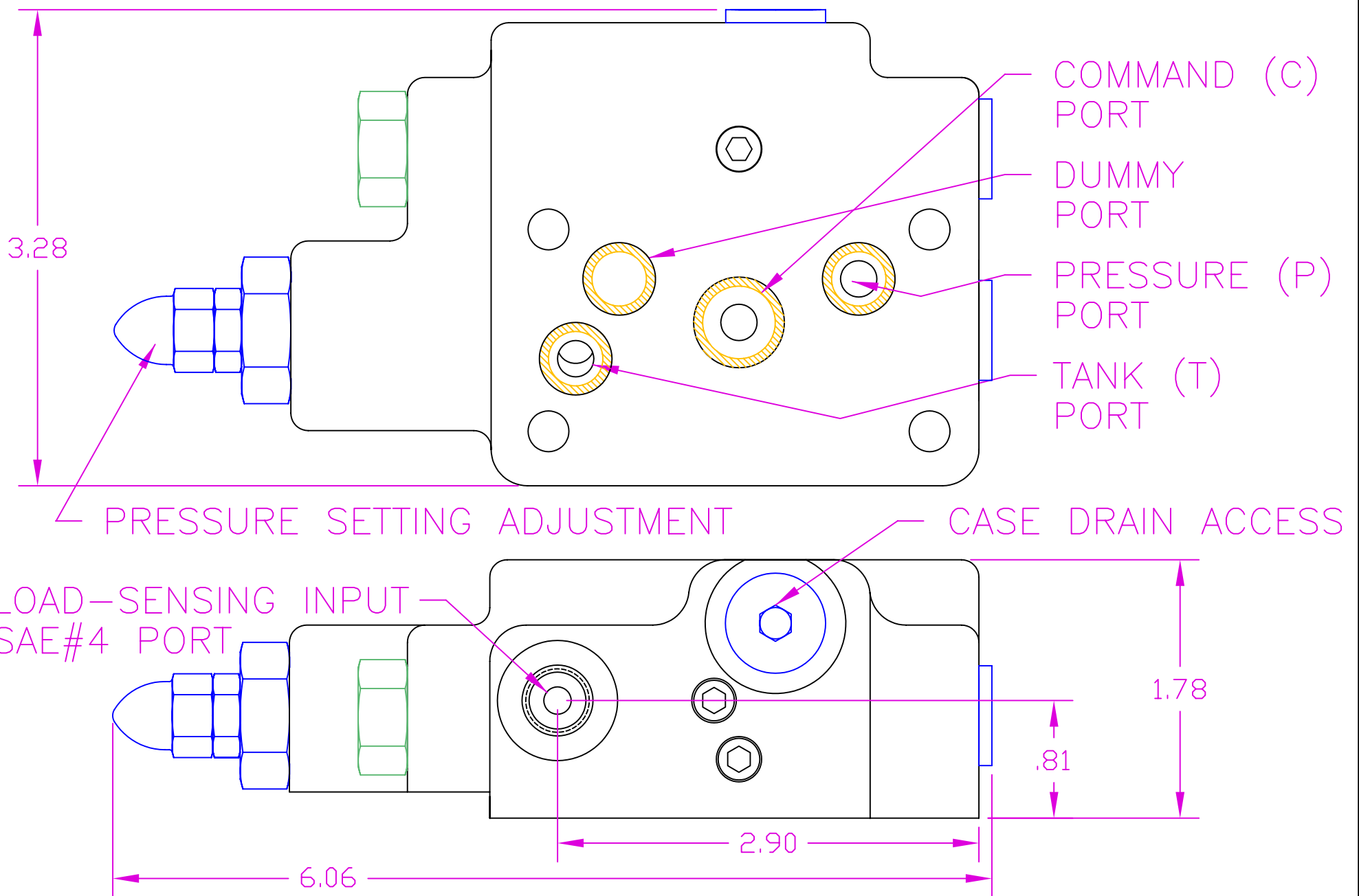
NOT TO SCALE

TITLE: PVX PUMP WITH A FIXED  
BIAS FLOW-LOAD SENSOR  
& PRESSURE COMPENSATOR

THE INFORMATION CONTAINED HEREIN IS THE PROPERTY OF  
HARTMANN CONTROLS INC., AND IS NOT TO BE USED IN A  
MANNER DETRIMENTAL TO HARTMANN CONTROLS INC.

DWG NO: LFLHPUMP





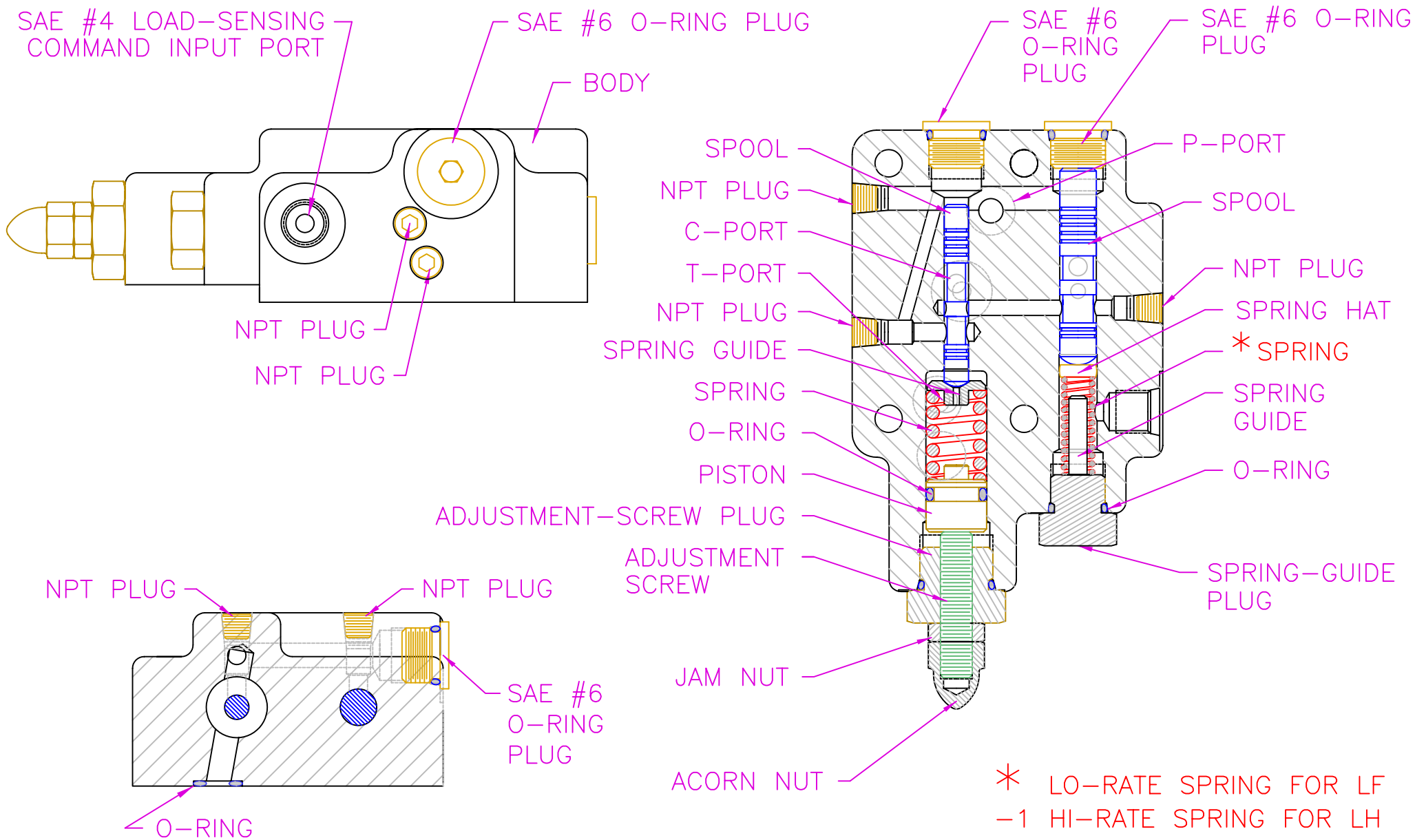
NOT TO SCALE

THE INFORMATION CONTAINED HEREIN IS THE PROPERTY OF HARTMANN CONTROLS INC., AND IS NOT TO BE USED IN A MANNER DETRIMENTAL TO HARTMANN CONTROLS INC.

DWG NO: 53220DIM

TITLE: OUTLINE OF A JOINT PRESSURE COMPENSATOR & LOAD SENSOR CONTROL





NOT TO SCALE

TITLE:

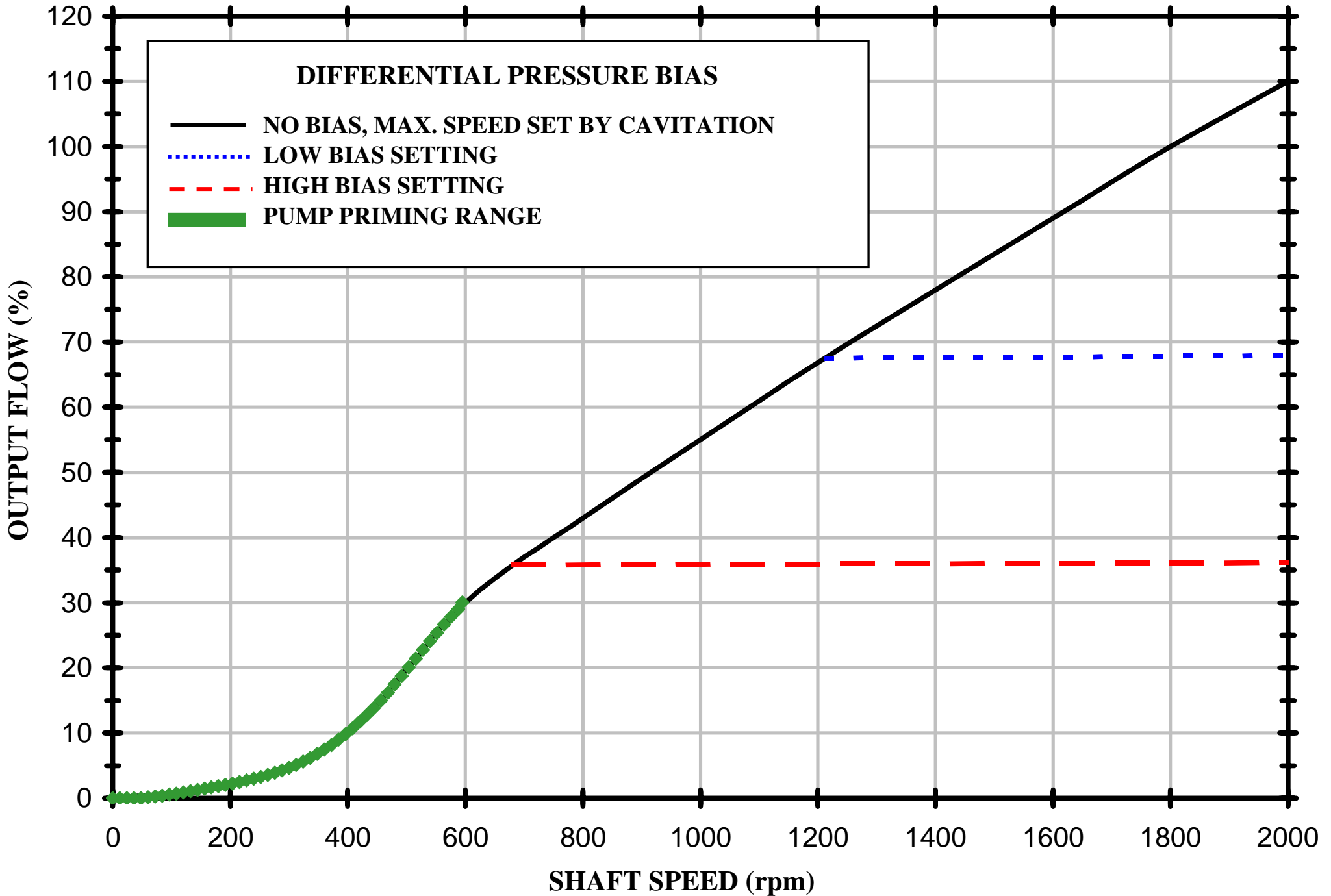
LAYOUT OF A JOINT  
PRESSURE COMPENSATOR AND NON-  
ADJUSTABLE FLOW-LOAD SENSOR CONTROL

THE INFORMATION CONTAINED HEREIN IS THE PROPERTY OF  
HARTMANN CONTROLS INC., AND IS NOT TO BE USED IN A  
MANNER DETRIMENTAL TO HARTMANN CONTROLS INC.

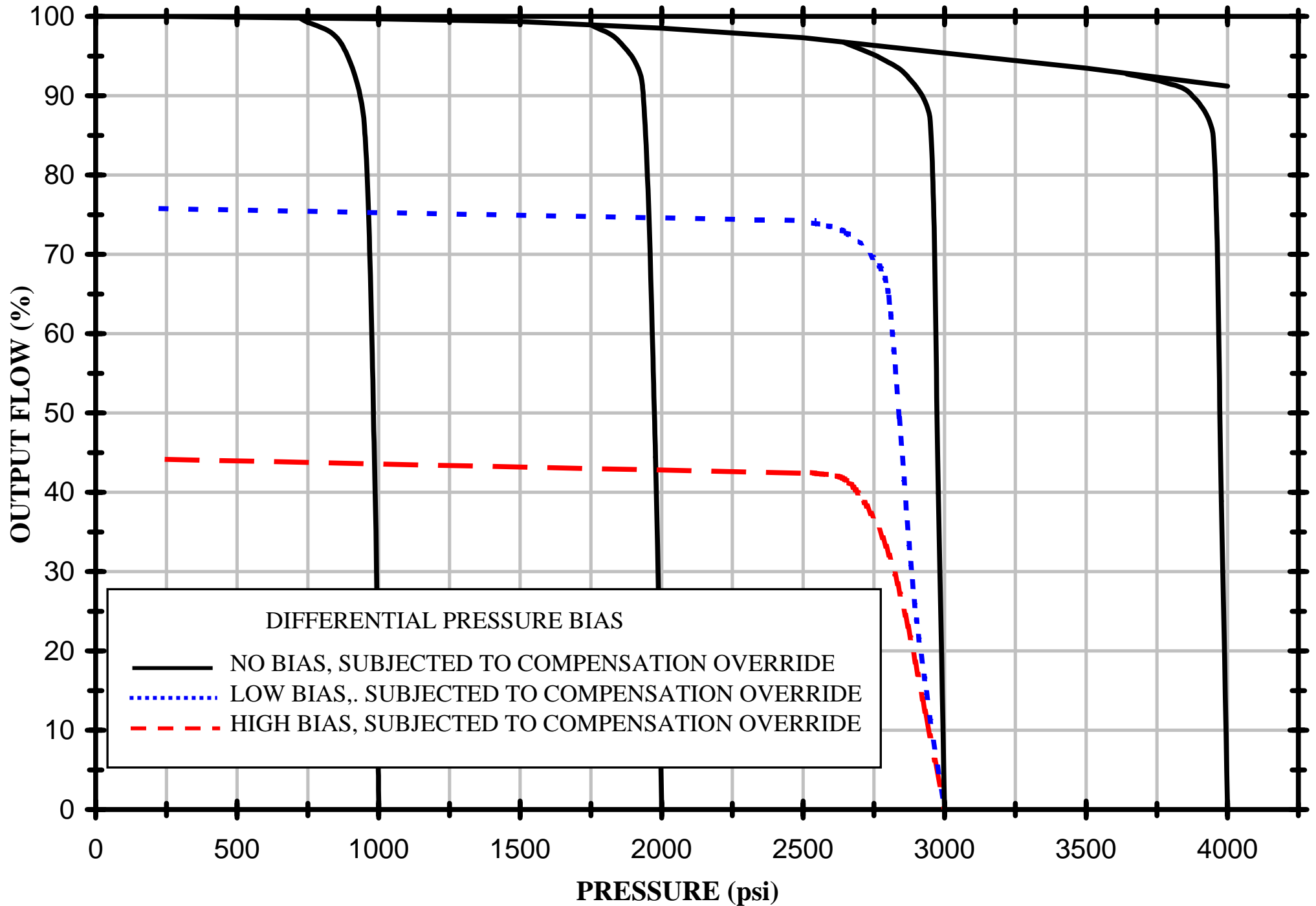
DWG NO: 53220LAY



**SPEED LOADING RESPONSE OF A LOAD-SENSOR GOVERNED  
VARIABLE DISPLACEMENT PUMP; ISO 32 OIL @ 115° F**

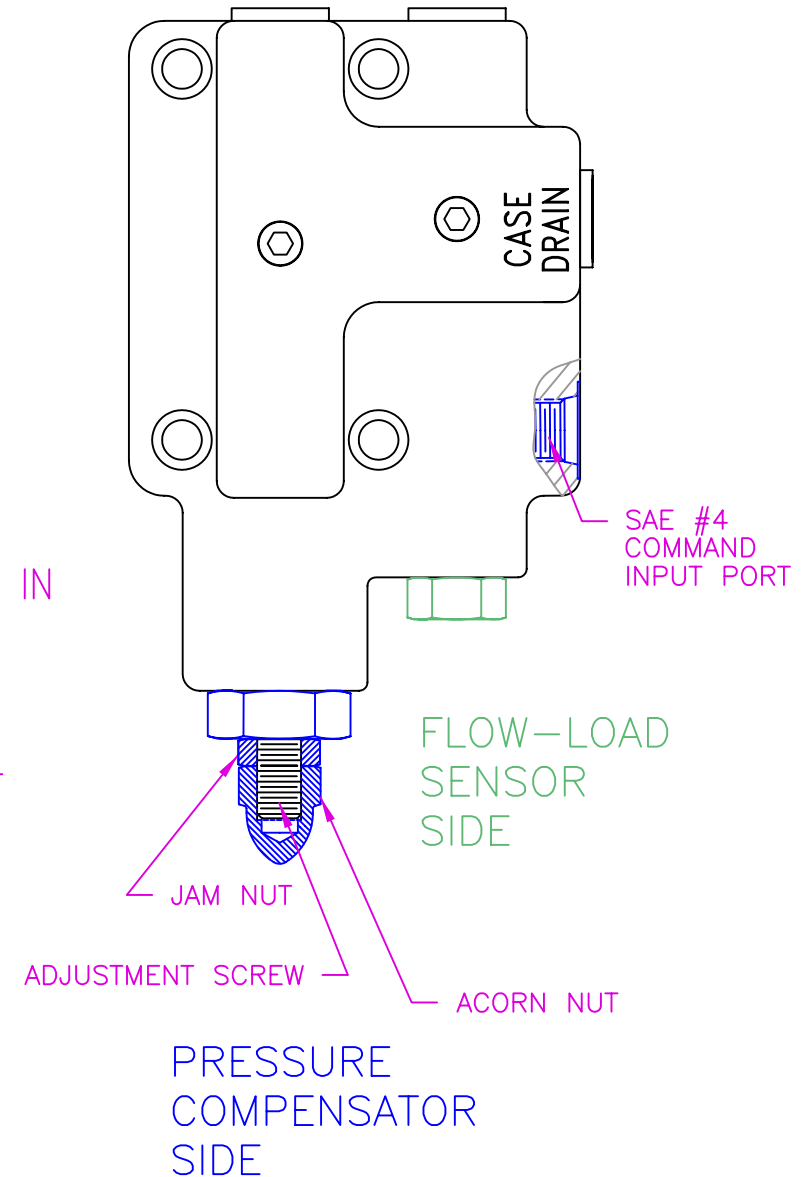


# PRESSURE LOADING RESPONSE OF A LOAD-SENSOR GOVERNED VARIABLE DISPLACEMENT PUMP; ISO 32 OIL @ 115° F



## PRESSURE SETTING ADJUSTMENT

1. UNJAM AND REMOVE ACORN NUT
2. INSERT ALLEN WRENCH INTO SCREW HEAD
3. HOLDING TIGHT THE ALLEN WRENCH, UNLOCK JAM NUT
4. WATCHING THE PRESSURE GAUGE, TURN ALLEN WRENCH GENTLY IN INCREMENTS OF LESS THAN 45°:
  - A. CLOCKWISE TURN INCREASES PRESSURE SETTING
  - B. COUNTER-CLOCKWISE TURN DECREASES PRESSURE SETTING
5. WHEN DONE, HOLD ALLEN WRENCH TIGHTLY AND LOCK JAM NUT
6. COVER THE SCREW WITH ACORN NUT AND JAM IT



NOT TO SCALE

TITLE:

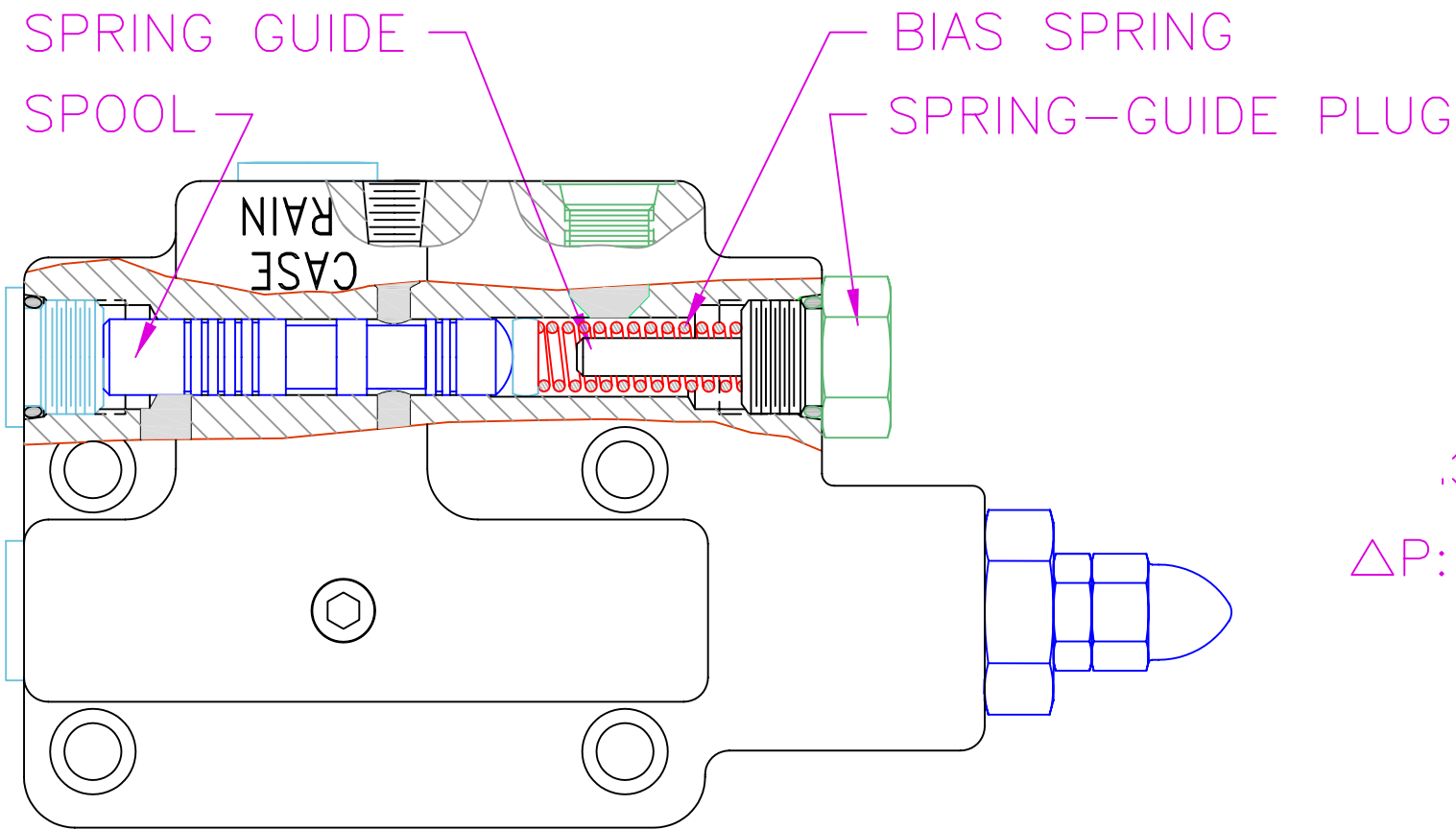
ADJUSTMENT INSTRUCTIONS  
FOR PRESSURE SETTINGS  
IN A LF/LH CONTROL

THE INFORMATION CONTAINED HEREIN IS THE PROPERTY OF  
HARTMANN CONTROLS INC., AND IS NOT TO BE USED IN A  
MANNER DETRIMENTAL TO HARTMANN CONTROLS INC.

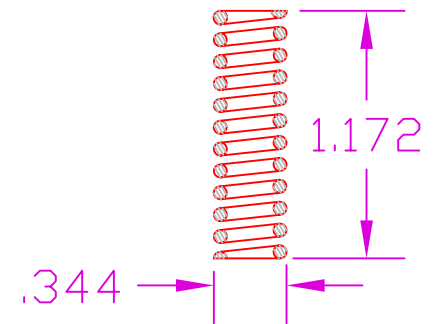
DWG NO: 53220ADJUSTMENT

**HARTMANN**  
CONTROLS INC.  
604 PROGRESS DRIVE  
HARTLAND, WI 53029



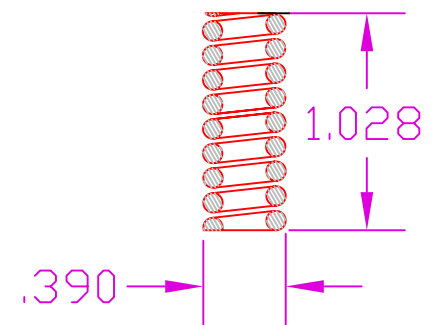


LOW-RATE SPRING



$\Delta P: 170-400$  PSI

HIGH-RATE SPRING



$\Delta P: 400-700$  PSI

1. UNJAM SPRING-GUIDE PLUG
2. UNSCREW IT AND PULL OUT THE GUIDE AND SPRING
3. REMOVE THE CURRENT SPRING
4. ENGAGE THE DESIRED SPRING ON THE GUIDE
5. INSERT PLUG ASSEMBLY BACK INTO THE BODY
6. SLOWLY SREW IN AND JAM THE SPRING-GUIDE PLUG

NOT TO SCALE

TITLE: BIAS-SPRING CHANGE  
IN A NON-ADJUSTABLE  
LF/LH CONTROL

THE INFORMATION CONTAINED HEREIN IS THE PROPERTY OF  
HARTMANN CONTROLS INC., AND IS NOT TO BE USED IN A  
MANNER DETRIMENTAL TO HARTMANN CONTROLS INC.

DWG NO: 53220SERVICE

