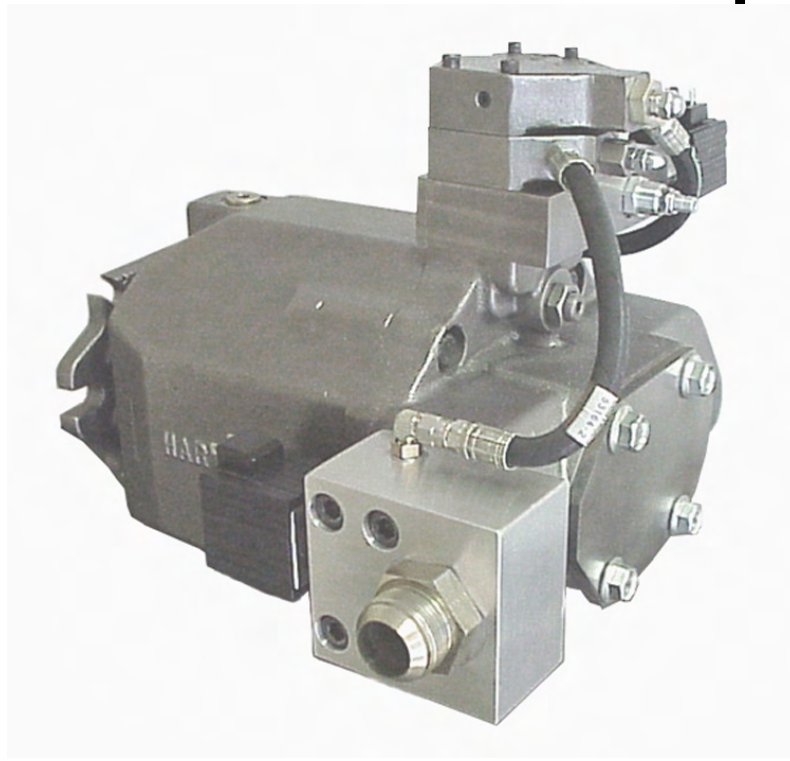
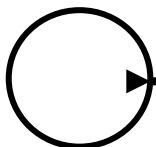




HL, HI-LO Pressure Control Manifold for PVX Series Pumps



*Hydraulic pumps & motors with a **hart of gold**™*



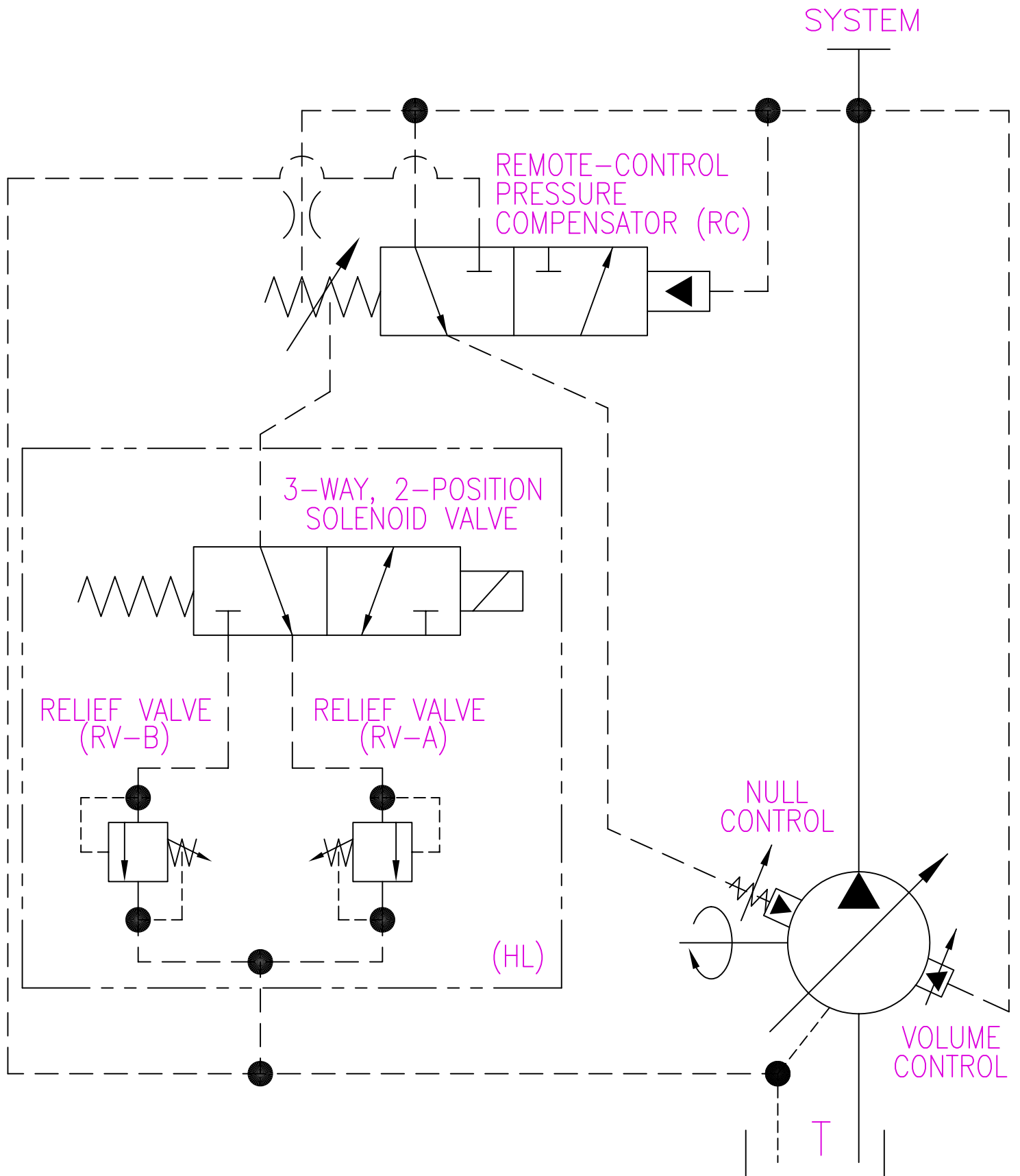
**604 PROGRESS DRIVE, HARTLAND, WI 53029
USA**

Phone: (262) 367-4299

FAX: (262) 367-5645

URL: www.hartmanncontrols.com

E-mail: sales@hartmanncontrols.com



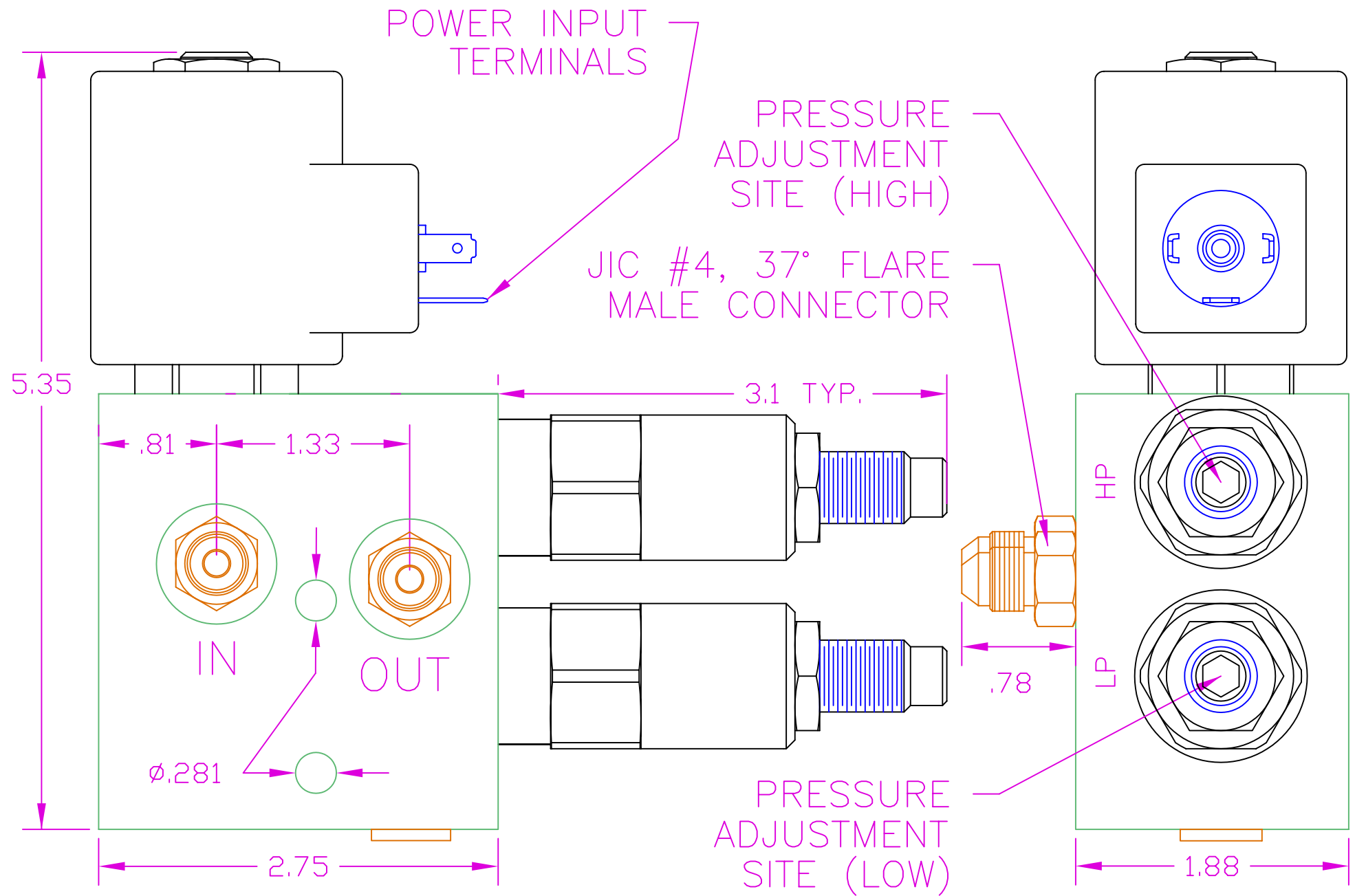
NOT TO SCALE

THE INFORMATION CONTAINED HEREIN IS THE PROPERTY OF HARTMANN CONTROLS INC., AND IS NOT TO BE USED IN A MANNER DETRIMENTAL TO HARTMANN CONTROLS INC.

DWG: SCMRCHL

TITLE: SOLENOID
SELECTED HIGH-LOW
COMPENSATOR





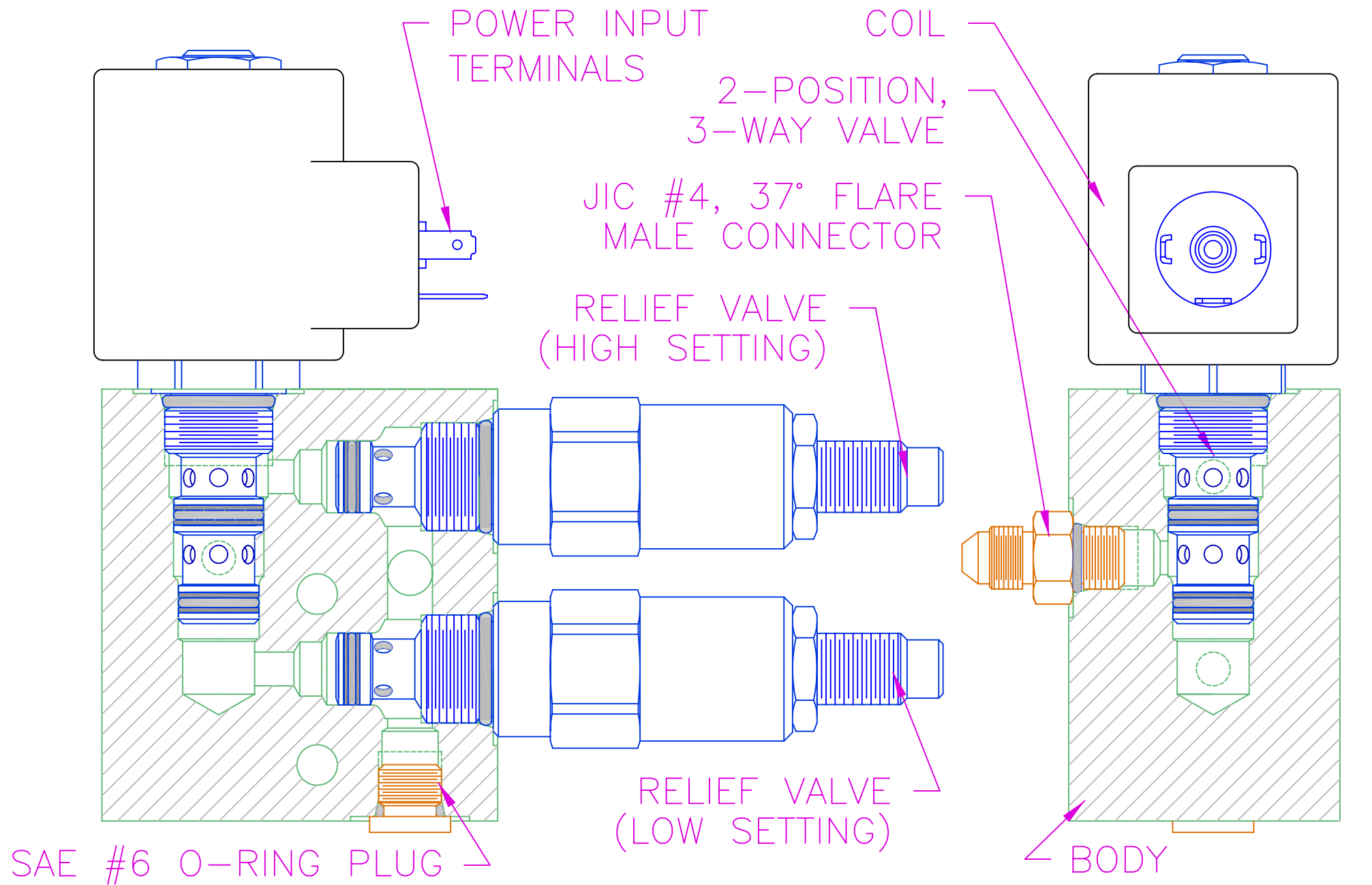
NOT TO SCALE

THE INFORMATION CONTAINED HEREIN IS THE PROPERTY OF HARTMANN CONTROLS INC., AND IS NOT TO BE USED IN A MANNER DETRIMENTAL TO HARTMANN CONTROLS INC.

DWG NO: 53196DIM

TITLE: OUTLINE OF A SOLENOID SELECTED HIGH-LOW PRESSURE CONTROL





NOT TO SCALE

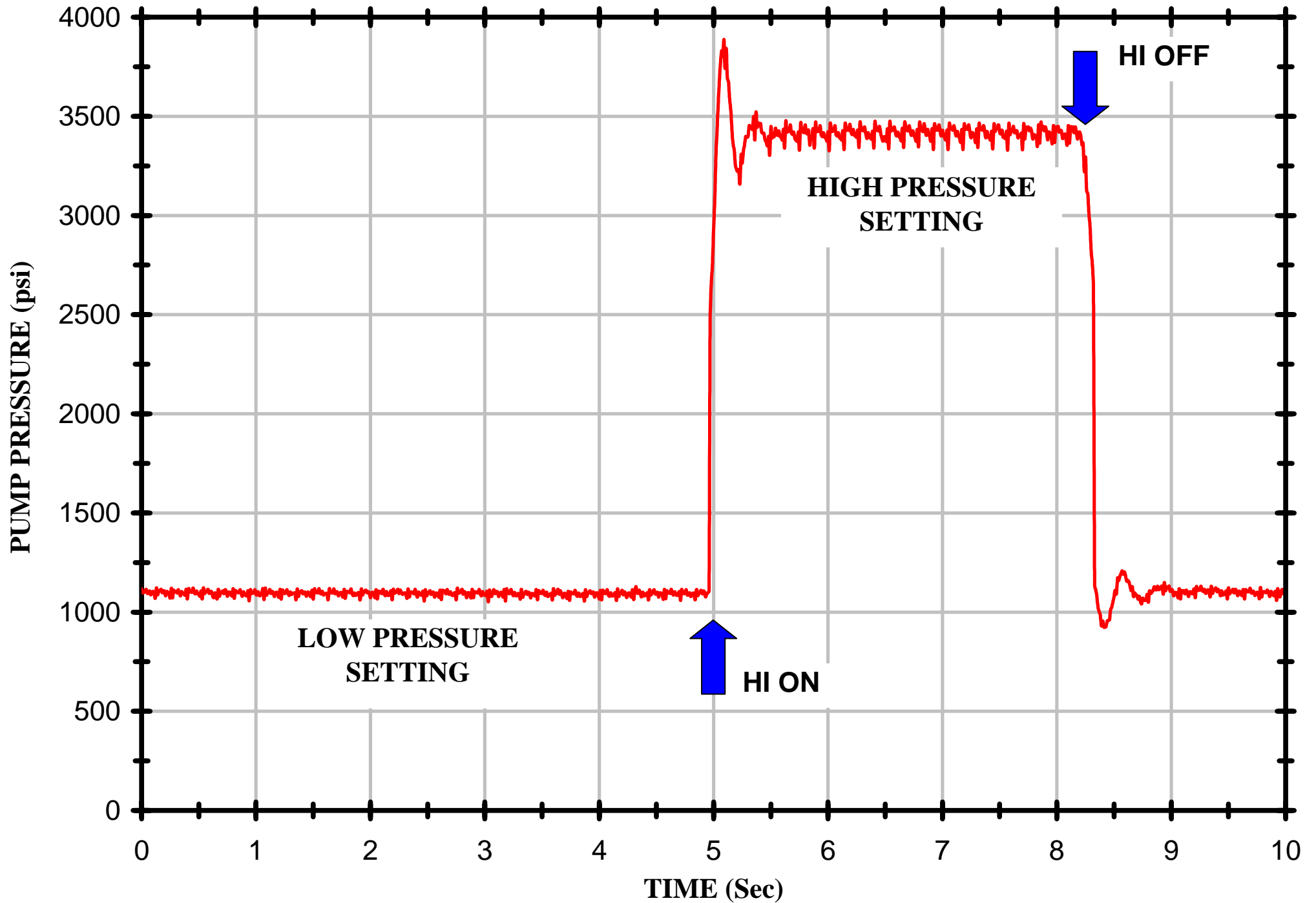
THE INFORMATION CONTAINED HEREIN IS THE PROPERTY OF HARTMANN CONTROLS INC., AND IS NOT TO BE USED IN A MANNER DETRIMENTAL TO HARTMANN CONTROLS INC.

DWG NO: 53196LAY

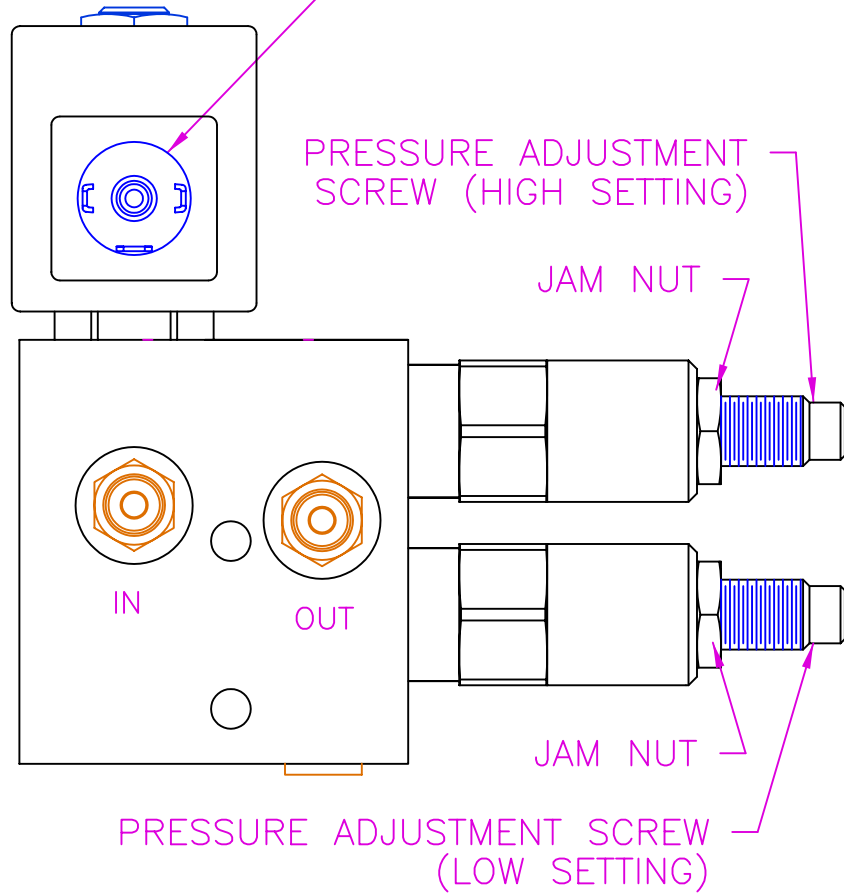
TITLE: LAYOUT OF A SOLENOID SELECTED HIGH-LOW PRESSURE CONTROL



**PRESSURE SIGNATURE OF A VARIABLE DISPLACEMENT PISTON
PUMP DURING HI-LO SWITCHING; ISO 32 OIL @ 115° F**



SOLENOID POWER
INPUT TERMINALS



LOW-PRESSURE SETTING ADJUSTMENT

1. RUN PUMP AT FULL FLOW AND DE-ENERGIZE COIL
2. DEAD-HEAD PUMP
3. INSERT ALLEN WRENCH INTO SCREW HEAD
4. HOLDING TIGHT THE WRENCH, UNLOCK THE JAM NUT
5. WATCHING THE PRESSURE GAUGE TURN ALLEN WRENCH GENTLY IN INCREMENTS OF LESS THAN 45°:
 - A. CLOCKWISE TURN INCREASES PRESSURE
 - B. COUNTER-CLOCKWISE TURN DECREASES PRESSURE
6. WHEN DONE, HOLD WRENCH TIGHTLY AND LOCK JAM NUT
7. ALLOW PUMP TO RETURN TO FULL FLOW

HIGH-PRESSURE SETTING ADJUSTMENT

1. RUN PUMP AT FULL FLOW AND ENERGIZE COIL
2. DEAD-HEAD PUMP
3. INSERT ALLEN WRENCH INTO SCREW HEAD
4. HOLDING TIGHT THE WRENCH, UNLOCK THE JAM NUT
5. WATCHING THE PRESSURE GAUGE TURN ALLEN WRENCH GENTLY IN INCREMENTS OF LESS THAN 45°:
 - A. CLOCKWISE TURN INCREASES PRESSURE
 - B. COUNTER-CLOCKWISE TURN DECREASES PRESSURE
6. WHEN DONE, HOLD WRENCH TIGHTLY AND LOCK JAM NUT
7. ALLOW PUMP TO RETURN TO FULL FLOW

NOT TO SCALE

THE INFORMATION CONTAINED HEREIN IS THE PROPERTY OF HARTMANN CONTROLS INC., AND IS NOT TO BE USED IN A MANNER DETRIMENTAL TO HARTMANN CONTROLS INC.

DWG NO: 53196ADJUST

TITLE:

PRESSURE ADJUSTMENT OF A
SOLENOID SELECTED HIGH-LOW
PRESSURE CONTROL

