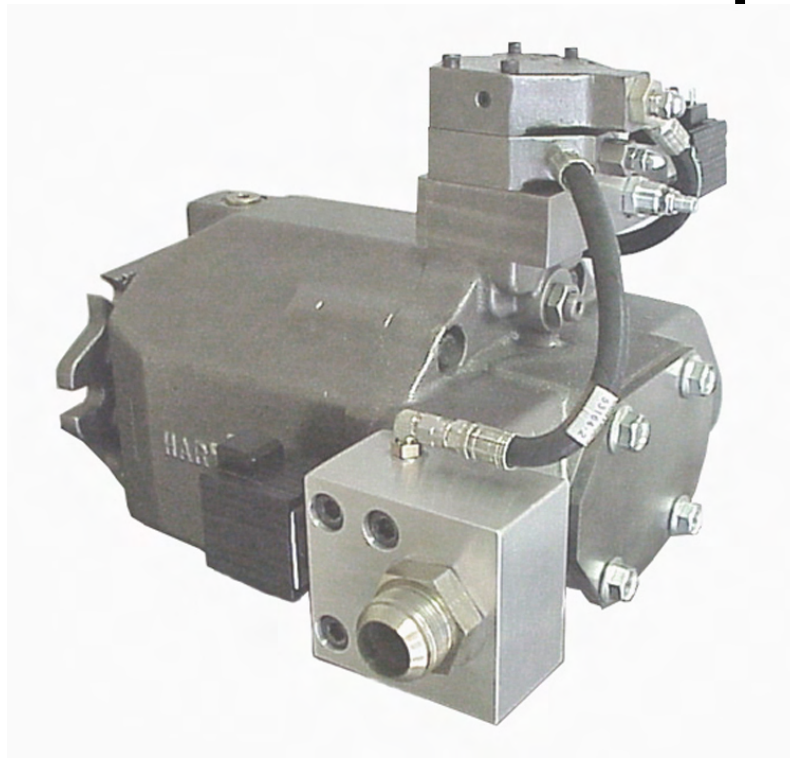
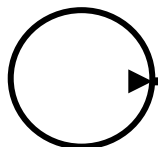




# EP, Electronic Pressure Compensation Control for PVX Series Pumps



*Hydraulic pumps & motors with a **hart of gold**™*



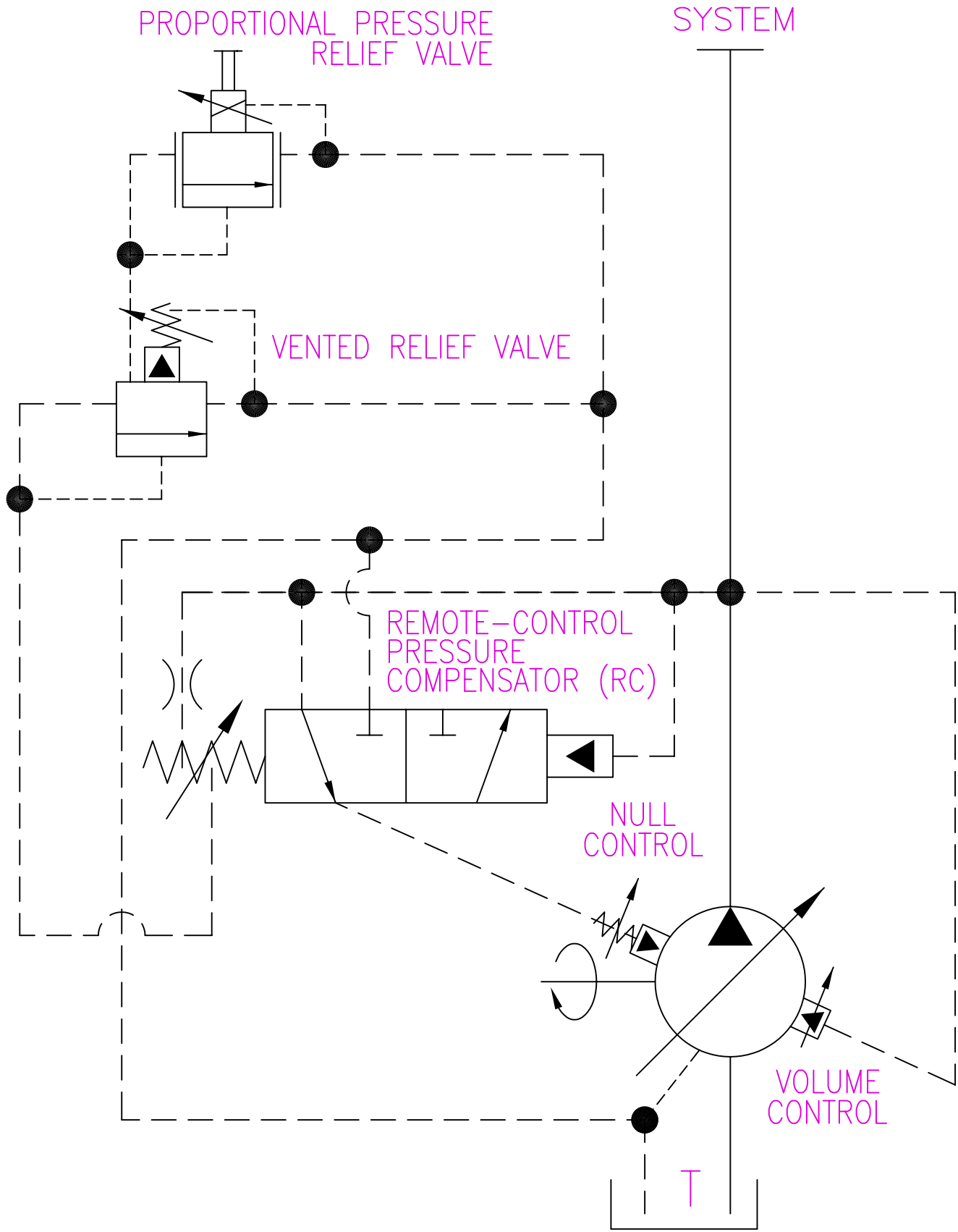
**604 PROGRESS DRIVE, HARTLAND, WI 53029  
USA**

**Phone: (262) 367-4299**

**FAX: (262) 367-5645**

**URL: [www.hartmanncontrols.com](http://www.hartmanncontrols.com)**

**E-mail: [sales@hartmanncontrols.com](mailto:sales@hartmanncontrols.com)**



NOT TO SCALE

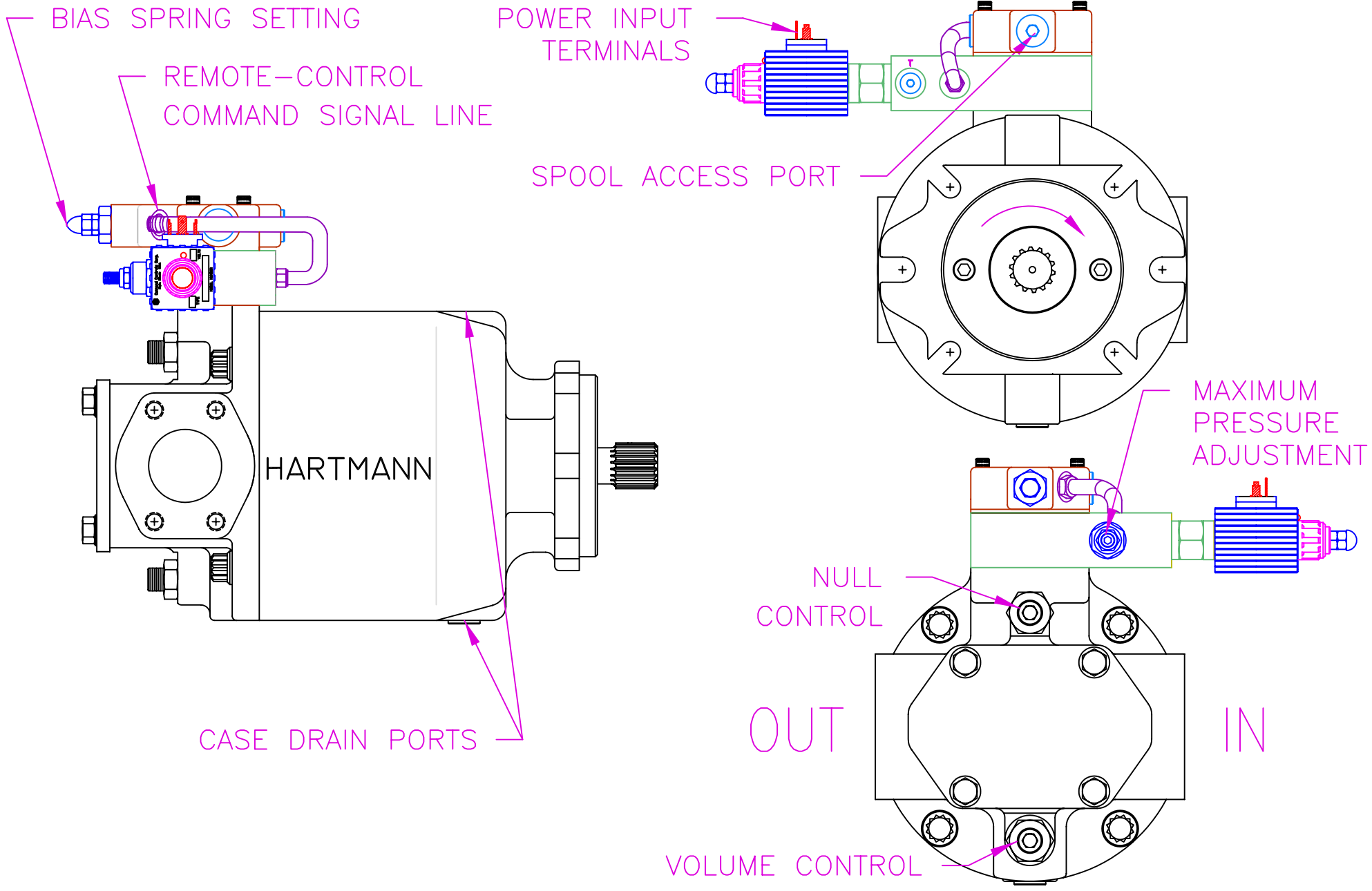
THE INFORMATION CONTAINED HEREIN IS THE PROPERTY OF HARTMANN CONTROLS INC., AND IS NOT TO BE USED IN A MANNER DETRIMENTAL TO HARTMANN CONTROLS INC.

DWG: SCMEP

TITLE: ELECTRONIC PRESSURE COMPENSATOR

604 PROGRESS DRIVE  
HARTLAND, WI 53029

CONTROLS INC.



NOT TO SCALE

THE INFORMATION CONTAINED HEREIN IS THE PROPERTY OF HARTMANN CONTROLS INC., AND IS NOT TO BE USED IN A MANNER DETRIMENTAL TO HARTMANN CONTROLS INC.

DWG NO: EPPUMP

TITLE: PVX PUMP WITH AN ELECTRONIC PRESSURE COMPENSATION CONTROL

604 PROGRESS DRIVE  
HARTLAND, WI 53029

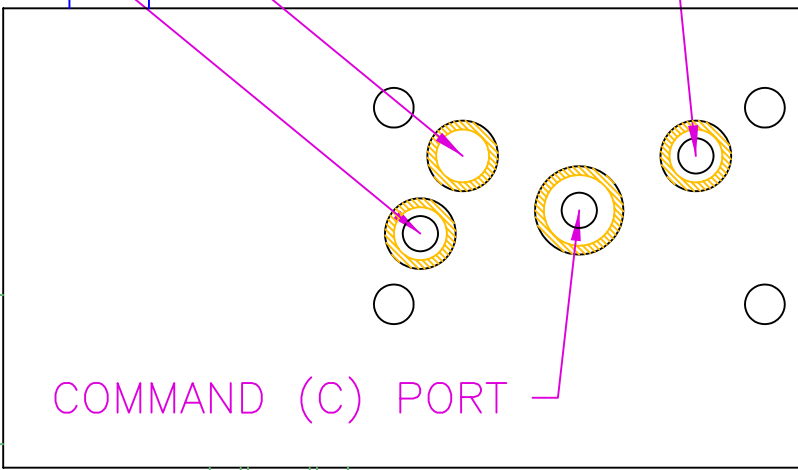
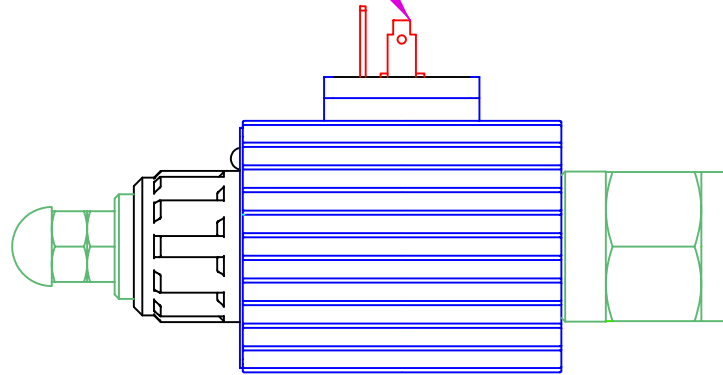
CONTROLS INC.

POWER INPUT  
TERMINALS

TANK (T) PORT

DUMMY PORT

PRESSURE (P) PORT

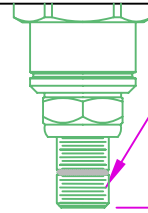


COMMAND (C) PORT

3.25

3.33

4.77

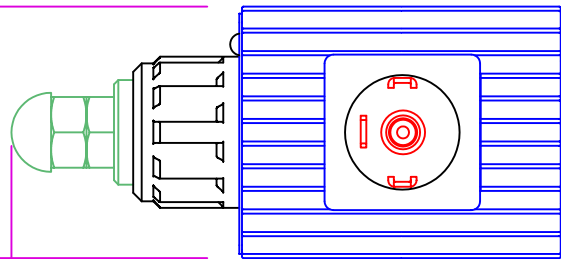


MAXIMUM  
PRESSURE  
ADJUSTMENT

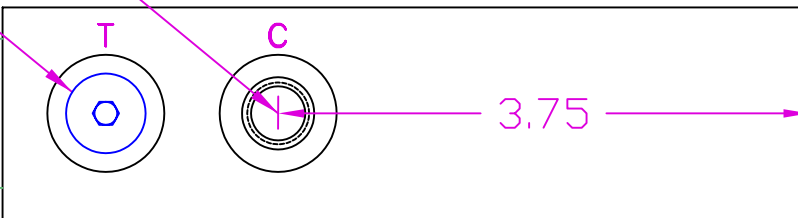
3.75

COMMAND SIGNAL  
INPUT PORT

TANK (T) ACCESS



1.78



3.75

1.50

5.70

10.74

NOT TO SCALE

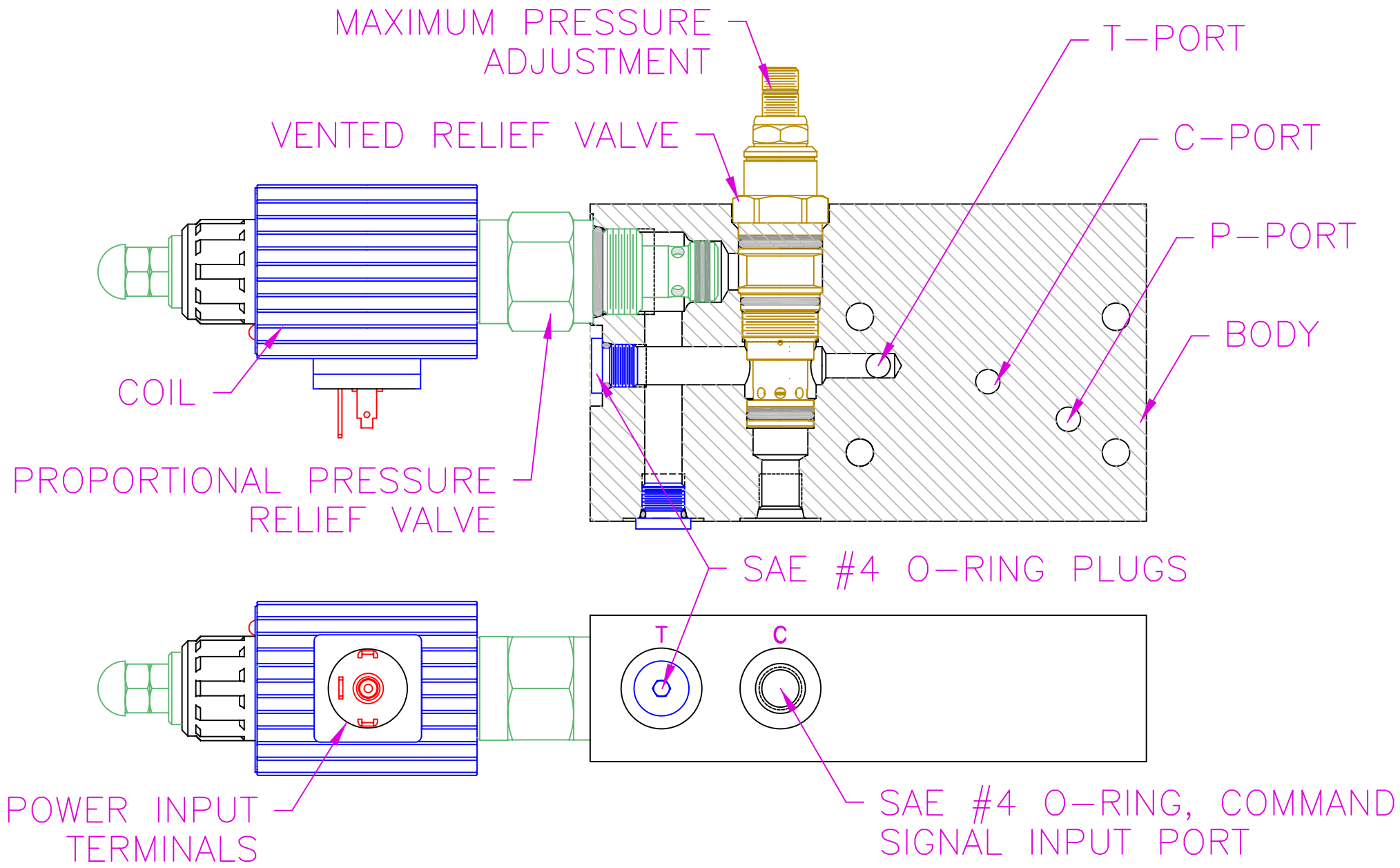
TITLE:

OUTLINE OF AN ELECTRONIC  
PRESSURE COMPENSATION CONTROL

THE INFORMATION CONTAINED HEREIN IS THE PROPERTY OF  
HARTMANN CONTROLS INC., AND IS NOT TO BE USED IN A  
MANNER DETRIMENTAL TO HARTMANN CONTROLS INC.

DWG NO: 53308DIM





NOT TO SCALE

TITLE:

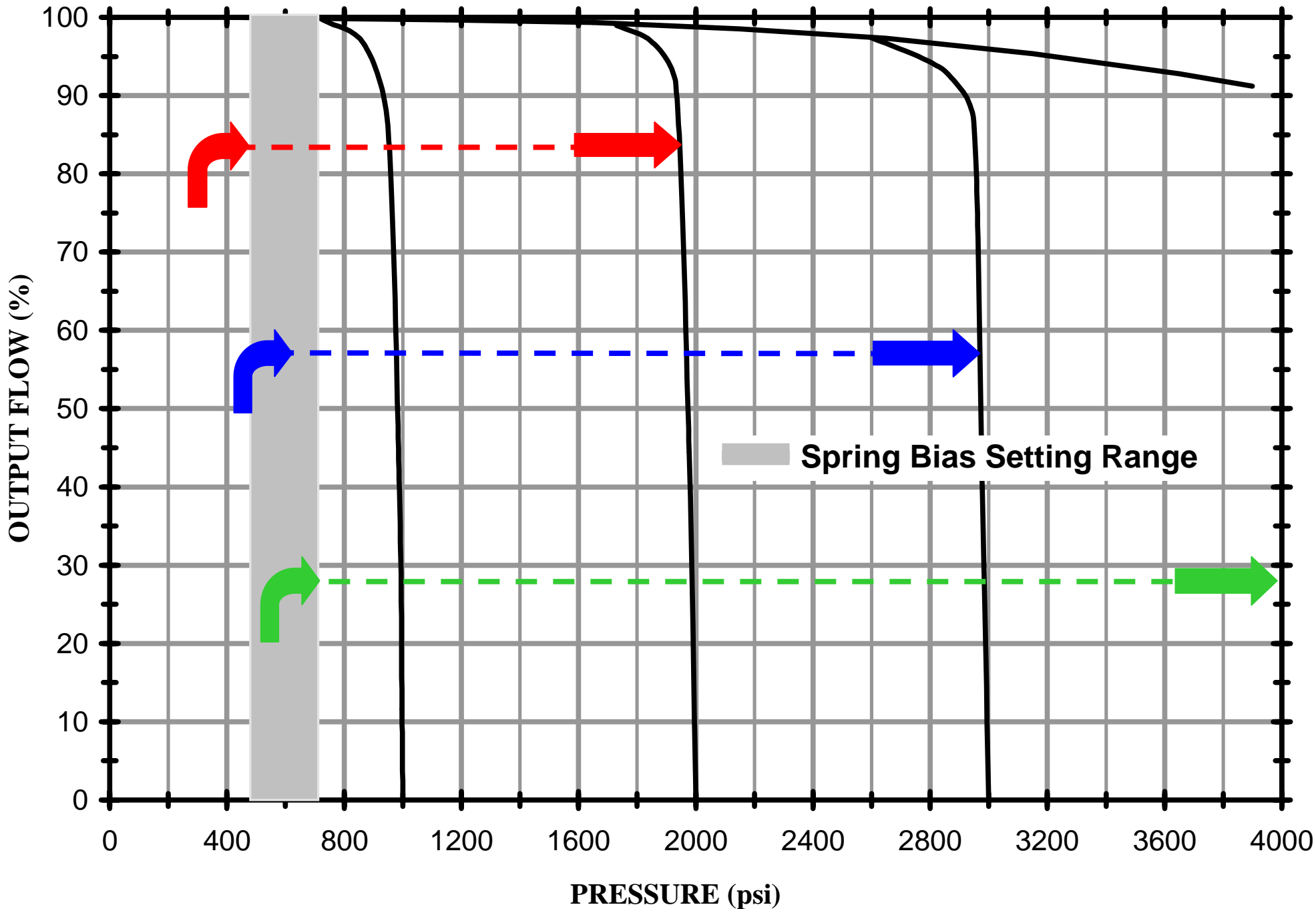
LAYOUT OF AN ELECTRONIC PRESSURE COMPENSATION CONTROL

THE INFORMATION CONTAINED HEREIN IS THE PROPERTY OF HARTMANN CONTROLS INC., AND IS NOT TO BE USED IN A MANNER DETRIMENTAL TO HARTMANN CONTROLS INC.

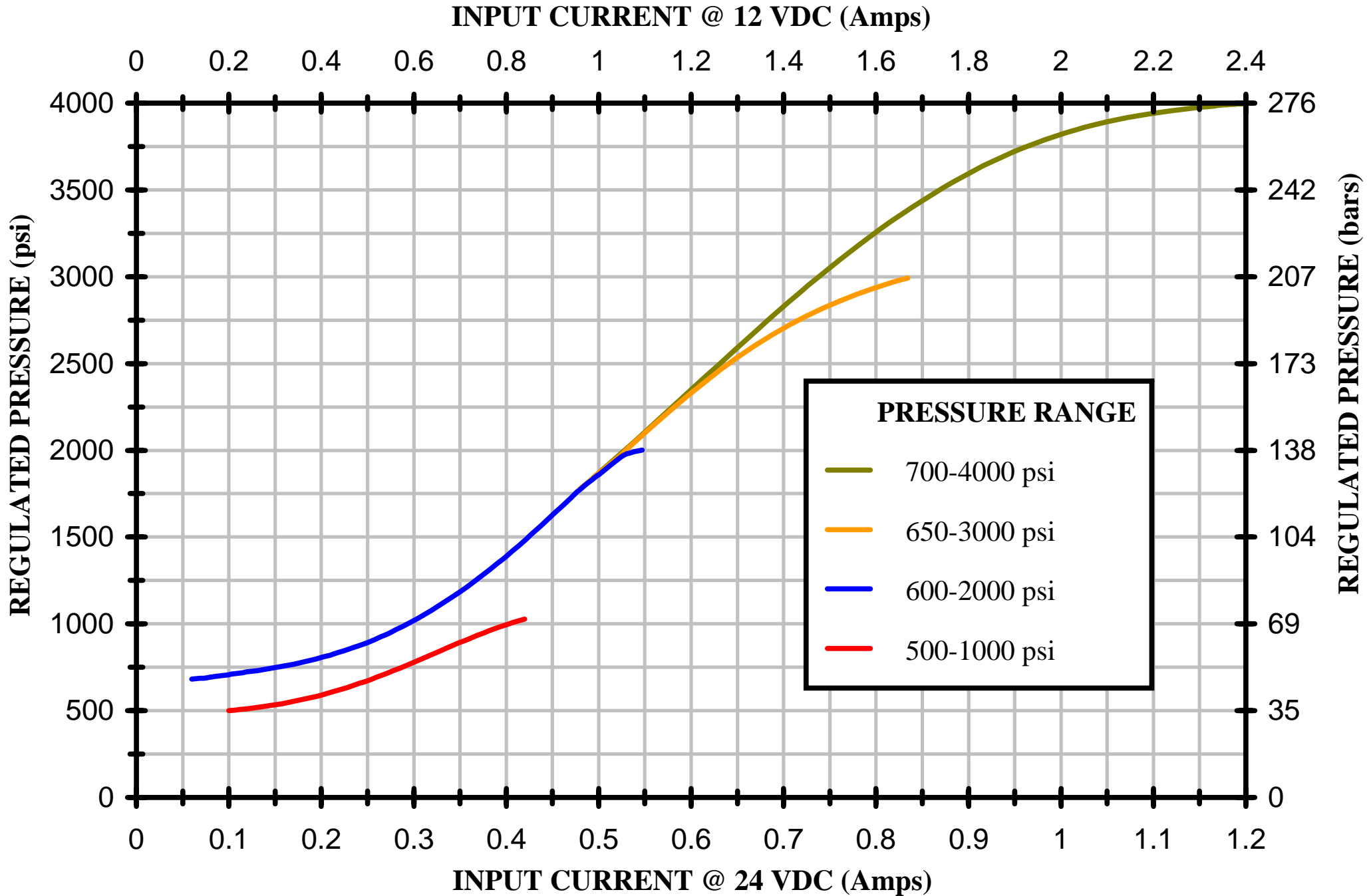
DWG NO: 53308LAY

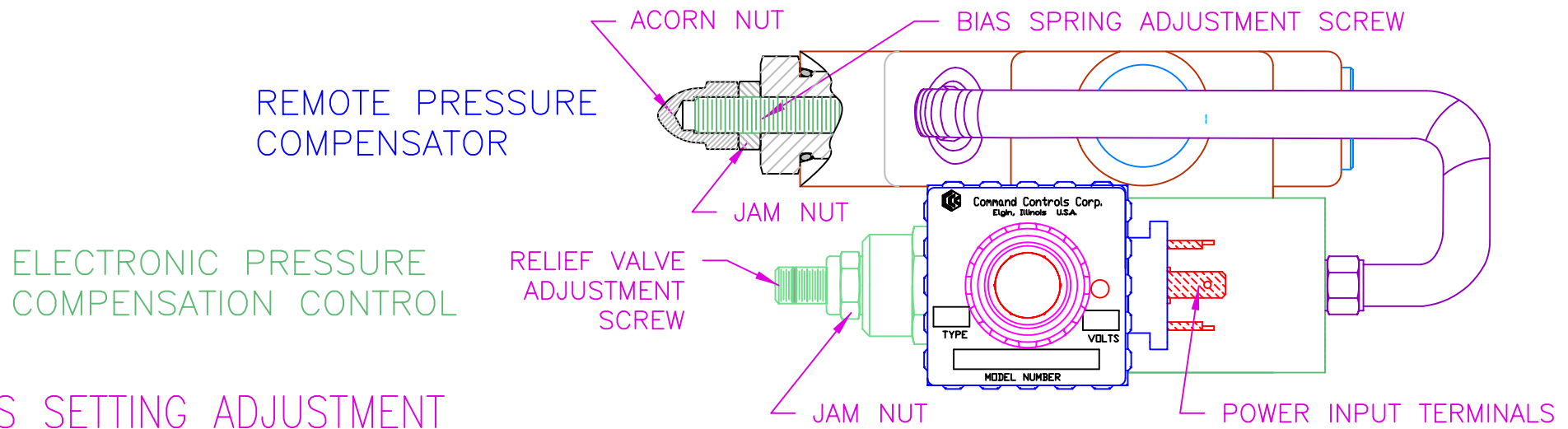
**HARTMANN**  
CONTROLS INC.  
604 PROGRESS DRIVE  
HARTLAND, WI 53029

# REMOTE-CONTROLLED PRESSURE-COMPENSATED PERFORMANCE OF A VARIABLE DISPLACEMENT PUMP; ISO 32 OIL @ 115° F



# RESPONSE CURVES OF ELECTRONIC PRESSURE COMPENSATION CONTROL IN SELECT PRESSURE RANGES; ISO 32 OIL @ 115° F





## BIAS SETTING ADJUSTMENT

1. ENERGIZE POWER INPUT TERMINALS AND REDUCE AMPERAGE TO THE MINIMUM SHOWN ON THE EP CHART.
2. REMOVE ACORN NUT FROM THE REMOTE COMPENSATOR. INSERT ALLEN WRENCH INTO SCREW HEAD.
3. HOLDING THE WRENCH TIGHT UNLOCK THE JAM NUT.
4. DEAD-HEAD PUMP WHILE WATCHING THE PRESSURE GAUGE AND GENTLY ADJUST BIAS SPRING TENSION:
  - A. CLOCKWISE TURN INCREASES PRESSURE SETTING
  - B. COUNTER-CLOCKWISE TURN DECREASES PRESSURE SETTING
5. SET BIAS SPRING TENSION ACCORDING TO THE EP-RC COMPENSATION CHART. LOCK JAM NUT.
6. COVER THE SCREW WITH ACORN NUT AND JAM IT.

## MAXIMUM PRESSURE-SETTING ADJUSTMENT

1. ENERGIZE POWER INPUT TERMINALS AND SET AMPERAGE AT THE MAXIMUM SHOWN ON THE EP CHART.
2. INSERT ALLEN WRENCH INTO THE SCREW HEAD OF THE RELIEF VALVE AND HOLDING IT TIGHT UNJAM NUT.
3. DEAD-HEAD PUMP AND WHILE WATCHING THE GAUGE, GENTLY ADJUST PRESSURE LEVEL UP OR DOWN.
4. LOCK THE JAM NUT.

NOT TO SCALE

THE INFORMATION CONTAINED HEREIN IS THE PROPERTY OF HARTMANN CONTROLS INC., AND IS NOT TO BE USED IN A MANNER DETRIMENTAL TO HARTMANN CONTROLS INC.

DWG NO: 53308ADJSTMNT

TITLE:

BIAS AND/OR MAXIMUM PRESSURE SETTING  
ADJUSTMENT IN AN ELECTRONIC PRESSURE  
COMPENSATION CONTROL

