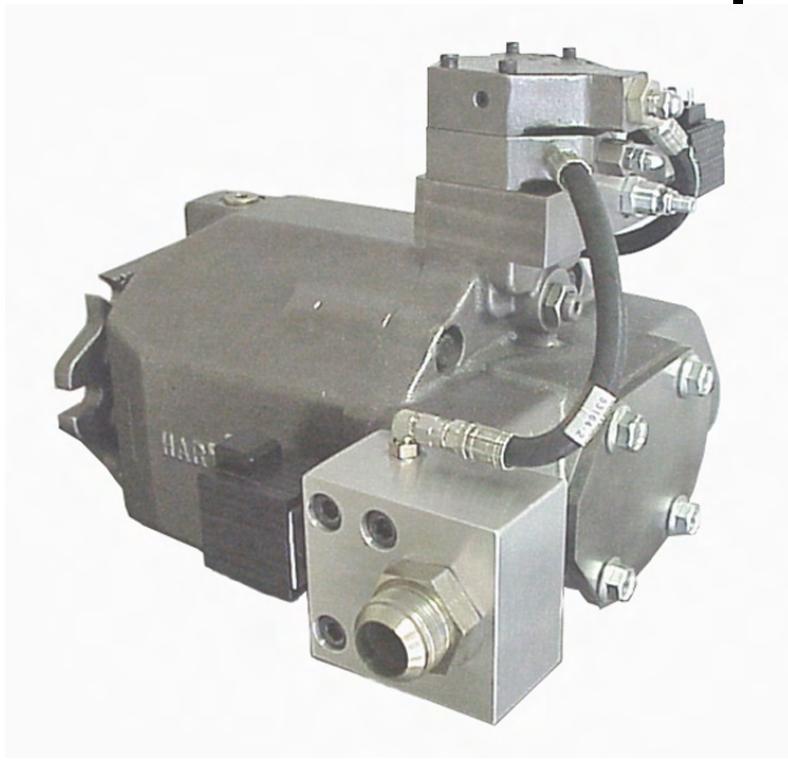
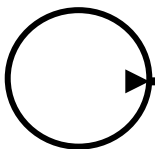


**HARTMANN**  
**PUMPS - MOTORS - CONTROLS**

# EF, Electronic Flow Throttling Control for PVX Series Pumps



*Hydraulic pumps & motors with a **hart of gold**™*



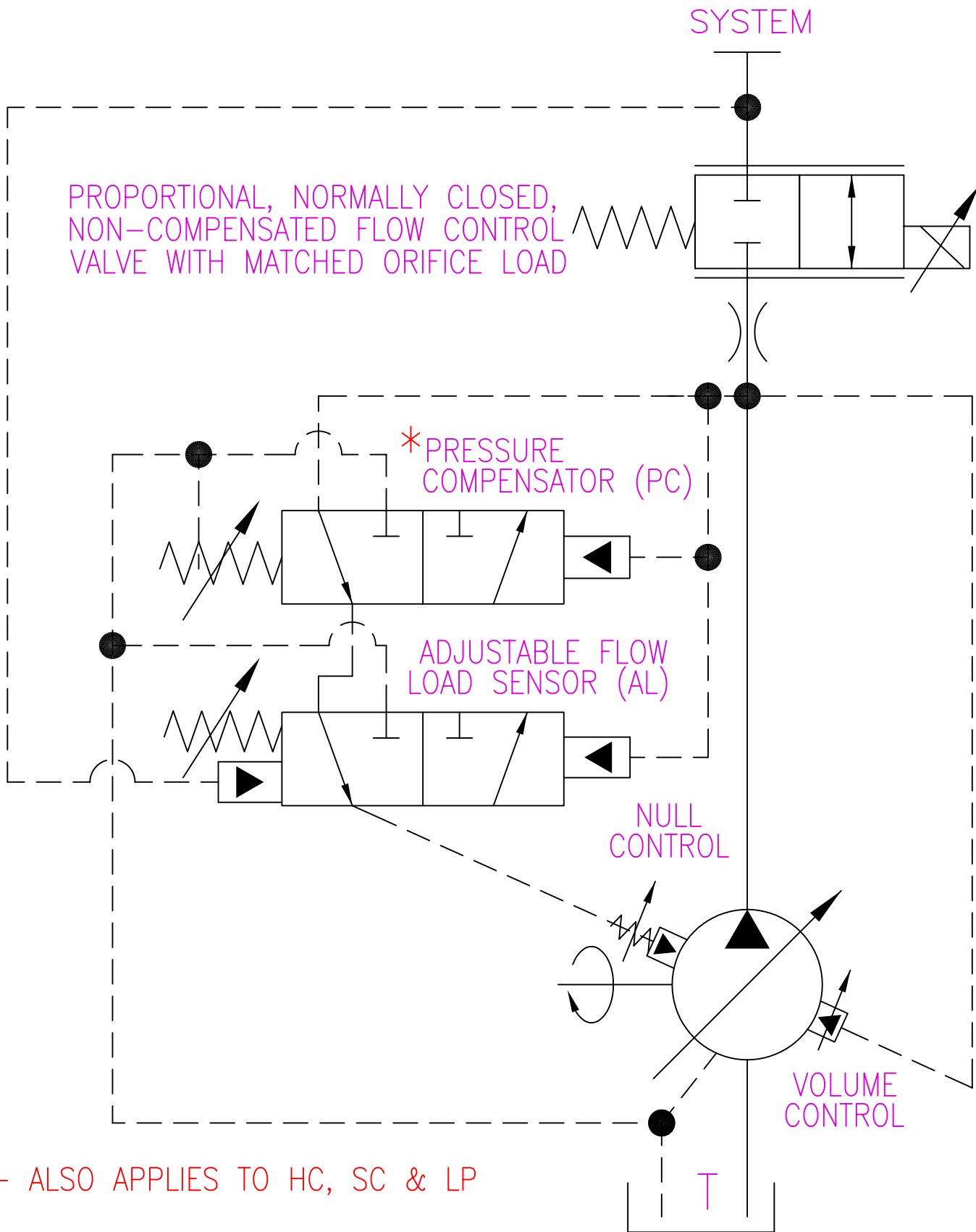
**604 PROGRESS DRIVE, HARTLAND, WI 53029  
USA**

**Phone: (262) 367-4299**

**FAX: (262) 367-5645**

**URL: [www.hartmanncontrols.com](http://www.hartmanncontrols.com)**

**E-mail: [sales@hartmanncontrols.com](mailto:sales@hartmanncontrols.com)**



\* - ALSO APPLIES TO HC, SC & LP

NOT TO SCALE

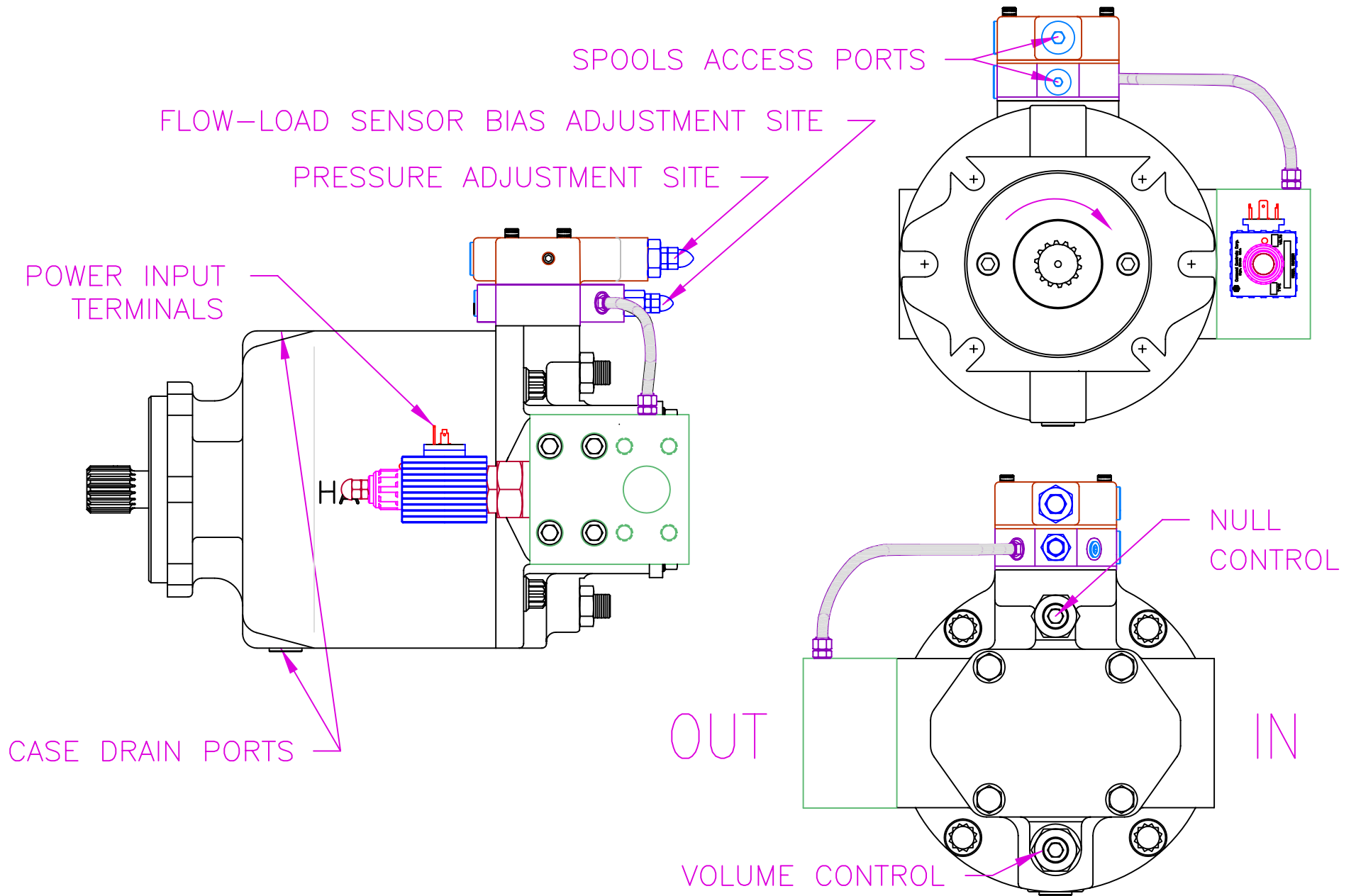
THE INFORMATION CONTAINED HEREIN IS THE PROPERTY OF HARTMANN CONTROLS INC., AND IS NOT TO BE USED IN A MANNER DETRIMENTAL TO HARTMANN CONTROLS INC.

DWG: SCMEF

TITLE: ELECTRONIC FLOW THROTTLING CONTROL WITH PRESSURE COMPENSATOR

604 PROGRESS DRIVE  
HARTLAND, WI 53029

CONTROLS INC.



NOT TO SCALE

THE INFORMATION CONTAINED HEREIN IS THE PROPERTY OF HARTMANN CONTROLS INC., AND IS NOT TO BE USED IN A MANNER DETRIMENTAL TO HARTMANN CONTROLS INC.

DWG NO: EFPUMP

TITLE: PVX PUMP WITH AN ELECTRONIC FLOW THROTTLING CONTROL



PRESSURE LOADING RESPONSE OF A PUMP GOVERNED BY  
ELECTRONIC FLOW THROTTLING CONTROL; ISO 32 OIL @ 115° F

PRESSURE COMPENSATOR OVERRIDE SET @ 2500

